

**LOS ANGELES COUNTY
DEPARTMENT OF PUBLIC WORKS**

BENCHMARKS



SAN DIMAS QUAD

**2005 ADJUSTMENT
2005 BASELINE
NAVD 88 DATUM FOOT/METER**

PREFACE

The Department of Public Works level net is composed of more than 1,700 miles or 2720 kilometers of levels supporting in excess of 9,000 benchmarks. Previously when a major readjustment of the net was undertaken, to emphasize the complete break with previous elevations, the CY, CG, and CL, series benchmarks were re-labeled DY, DG, and DL, respectively. Beginning in 1993 the Baseline readjustment year will be indicated on Baseline BM's, as indicated below (*). Henceforth all BM numbers will be labeled as a Y, G, or L series that will no longer indicate the major adjustment year.

To facilitate the adjustment, indexing and distribution of the adjusted values of the net, the county territory was divided into 33 quads or areas. For the identification purposes each quad was given a name (i.e. "Rosemead", "La Mirada", and "Santa Fe"...etc). When benchmarks and elevations in the quad are used, the name of the bench and quad must be stated in the description, i.e.:

(*)	BASELINE	90.057	L&BR IN CTR OF CB RET @ NE COR	Y 9191
	(1990)	295.461	LA HABRA BLVD & VALLEY HOME AVE	

It is expected that this general adjustment will for the most part remain sound for 8 to 10 years. Updating constrained adjustments will continue in the future. When a quad is readjusted, new elevations will be published and the date of readjustment will be noted in the benchmark description. Two benchmarks with different adjustment dates will not normally agree with each other.

The basic accuracy of the net is reflected by an indicated field probable error of ± 0.017 feet per mile (4mm per kilometer) of leveling as determined from conditions of closure. However, many years of experience in vertical control in the greater Los Angeles basin and Antelope Valley indicates that because of varying degrees of subsidence and heaving, the true datum is recovered only by obtaining substantial agreement of a number of benchmarks.

The users of this network of benchmarks are invited to assist in its maintenance by notifying this department of cases of obliteration, apparent mistakes in descriptions or elevations, and the disturbance of benchmarks.

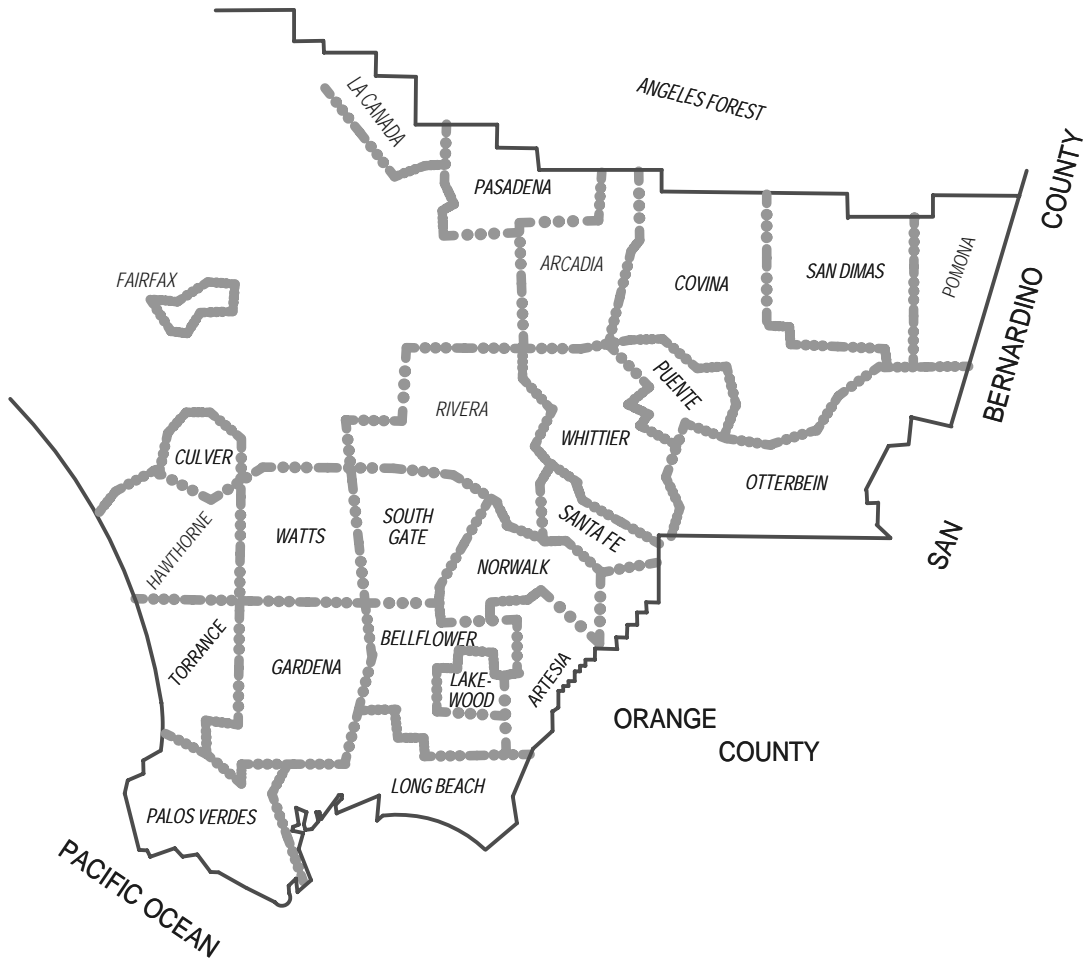
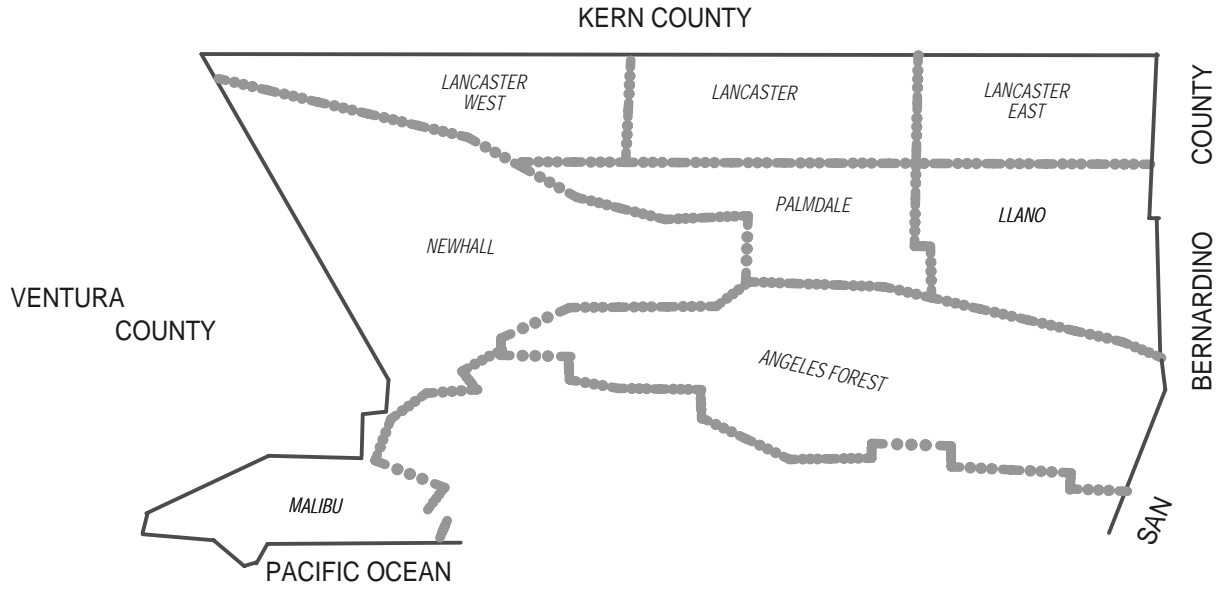
Datum: North American Vertical Datum of 1988 (NAVD88)

Note: NAVD 1988 minus approximately 2.3 feet (70 cm) equals NGVD 1929 Datum. For more accurate equations at individual benchmarks refer to previous publications.

Abbreviations used in Benchmark Descriptions

Abbreviations	Descriptions	Abbreviations	Descriptions
<i>ABUT</i>	Abutment	<i>LT</i>	Lead and Tack
<i>ALG</i>	Along	<i>LACE</i>	Los Angeles City Engineer
<i>ANG PT</i>	Angle Point	<i>LACS</i>	La County Engineer
<i>B/W</i>	Back of Walk	<i>LAFC</i>	La County Flood Control
<i>BCR</i>	Begin Curb Return	<i>L&BN</i>	Lead and Bench Nail
<i>BC</i>	Begin Curve	<i>L&BR</i>	Lead and Brad
<i>BLDG</i>	Building	<i>L&N</i>	Lead and Nail
<i>BM</i>	Benchmark	<i>L&SPK</i>	Lead and Spike
<i>BT SPK</i>	Boat or Bolt Spike	<i>L&T</i>	Lead and Tack
<i>BR CAP</i>	Brass Cap Monument	<i>MCR</i>	Middle Curb Return
<i>C B</i>	Catch Basin	<i>MKD</i>	Marked
<i>CTR</i>	Center	<i>MC</i>	Middle Curve
<i>C/L</i>	Centerline	<i>MON</i>	Monument
<i>C/L INT</i>	Centerline Intersection	<i>N/O</i>	North of
<i>C/L PROD</i>	Centerline Produced	<i>NR</i>	Near
<i>CONC</i>	Concrete	<i>OPP</i>	Opposite
<i>COR</i>	Corner	<i>PI</i>	Point of Intersection
<i>COE</i>	Corps of Engineers	<i>PK&W</i>	PK Nail and Washer
<i>CULV</i>	Culvert	<i>P/L</i>	Property Line
<i>CYN</i>	Canyon	<i>POST</i>	Point on Simi-Tangent
<i>CB</i>	Curb	<i>PP</i>	Power Pole
<i>CS MON</i>	Co. Eng. Monument	<i>PVMT</i>	Pavement
<i>CT SPK</i>	Cut Spike	<i>PROD</i>	Produced
<i>DPW</i>	Dept of Public Works	<i>RD</i>	Road
<i>DR</i>	Driveway	<i>RDBM</i>	Road Dept Benchmark
<i>E/O</i>	East of	<i>RDBM TAG</i>	Road Dept Benchmark Tag
<i>ECR</i>	End Curb Return	<i>RR</i>	Railroad
<i>EC</i>	End Curve	<i>R/W</i>	Right of Way
<i>ENT</i>	Entrance	<i>SDMH</i>	Storm Drain Manhole
<i>FL</i>	Flow line	<i>SMH</i>	Sewer Manhole
<i>FTG</i>	Footing	<i>SPK</i>	Spike
<i>FRWY</i>	Freeway	<i>ST&W</i>	Spike Tin and Washer
<i>F/W</i>	Front of Walk	<i>S/O</i>	South of
<i>GAR</i>	Garage	<i>TP</i>	Telephone Pole
<i>HDWL</i>	Head Wall	<i>USC&GS</i>	US Coast and Geodetic Survey
<i>HSE</i>	House	<i>USGS</i>	US Geological Survey
<i>HWY</i>	Highway	<i>WK</i>	Walk
<i>INT</i>	Intersection	<i>W/O</i>	West of
<i>IP</i>	Iron Pipe		

QUAD COVERAGE INDEX MAP

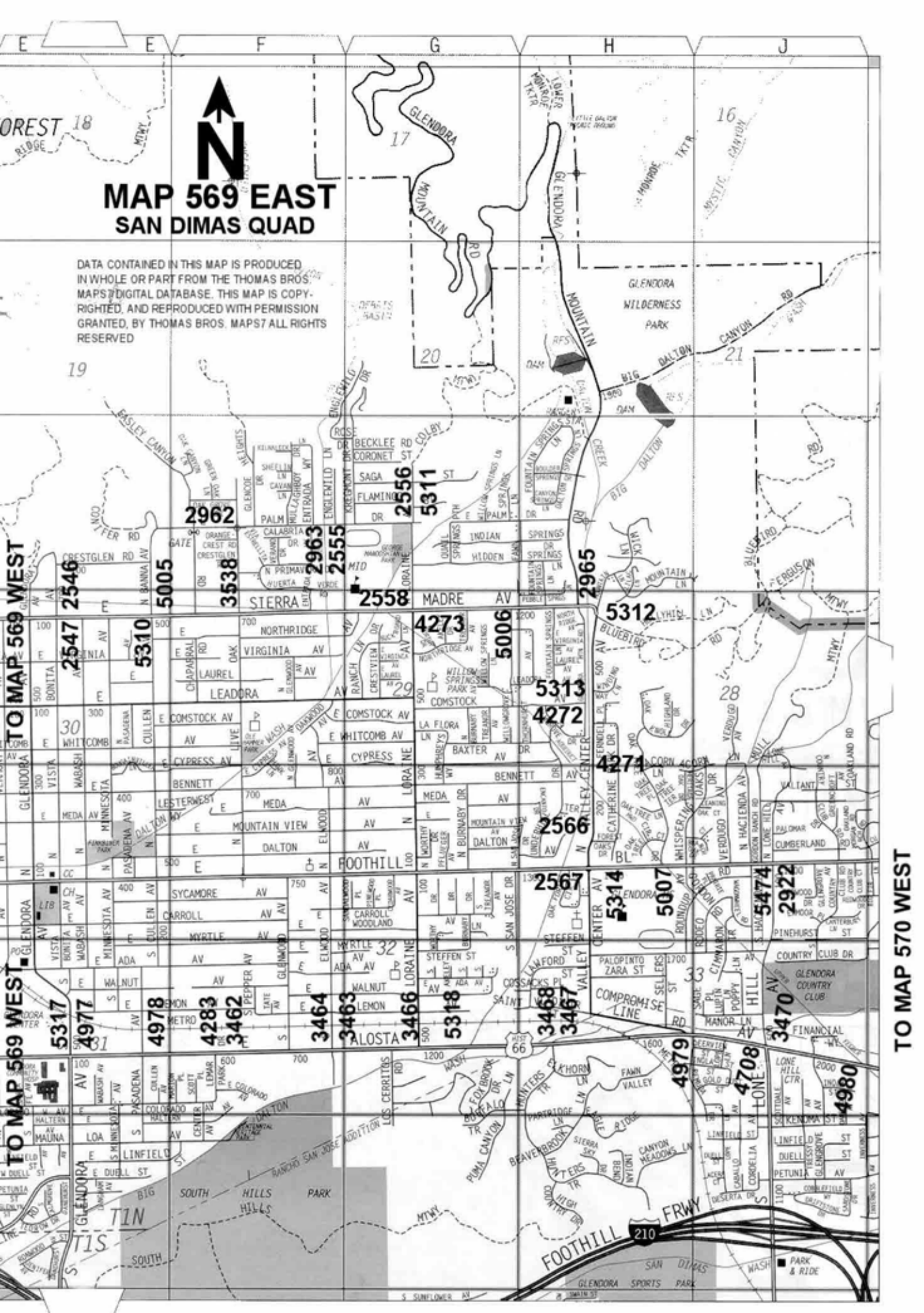


SAN DIMAS QUAD INDEX



**NUMBERS REFER TO
THOMAS BROS PAGE
NUMBERS.**

**EACH THOMAS BROS
PAGE IS DIVIDED INTO
TWO INDEX PAGES
EAST AND WEST**



**MAP 569 EAST
SAN DIMAS QUAD**



DATA CONTAINED IN THIS MAP IS PRODUCED IN WHOLE OR PART FROM THE THOMAS BROS. MAPS DIGITAL DATABASE. THIS MAP IS COPYRIGHTED, AND REPRODUCED WITH PERMISSION GRANTED, BY THOMAS BROS. MAPS ALL RIGHTS RESERVED

TO MAP 569 WEST

TO MAP 570 WEST

OREST 18
BLIDGE

17
GLENDDORA

16

19

20

21

TO MAP 569 WEST

TO MAP 569 WEST

28

29

30

31

32

33

34

35

36

37

38

39

40

41

42

43

44

45

46

47

48

49

50

51

52

53

54

55

56

57

58

59

60

61

62

63

64

65

66

67

68

69

70

71

72

73

74

75

76

77

78

79

80

81

82

83

84

85

86

87

88

89

90

91

92

93

94

95

96

97

98

99

100

101

102

103

104

105

106

107

108

109

110

111

112

113

114

115

116

117

118

119

120

121

122

123

124

125

126

127

128

129

130

131

132

133

134

135

136

137

138

139

140

141

142

143

144

145

146

147

148

149

150

151

152

153

154

155

156

157

158

159

160

161

162

163

164

165

166

167

168

169

170

171

172

173

174

175

176

177

178

179

180

181

182

183

184

185

186

187

188

189

190

191

192

193

194

195

196

197

198

199

200

201

202

203

204

205

206

207

208

209

210

211

212

213

214

215

216

217

218

219

220

221

222

223

224

225

226

227

228

229

230

231

232

233

234

235

236

237

238

239

240

241

242

243

244

245

246

247

248

249

250

251

252

253

254

255

256

257

258

259

260

261

262

263

264

265

266

267

268

269

270

271

272

273

274

275

276

277

278

279

280

281

282

283

284

285

286

287

288

289

290

291

292

293

294

295

296

297

298

299

300

301

302

303

304

305

306

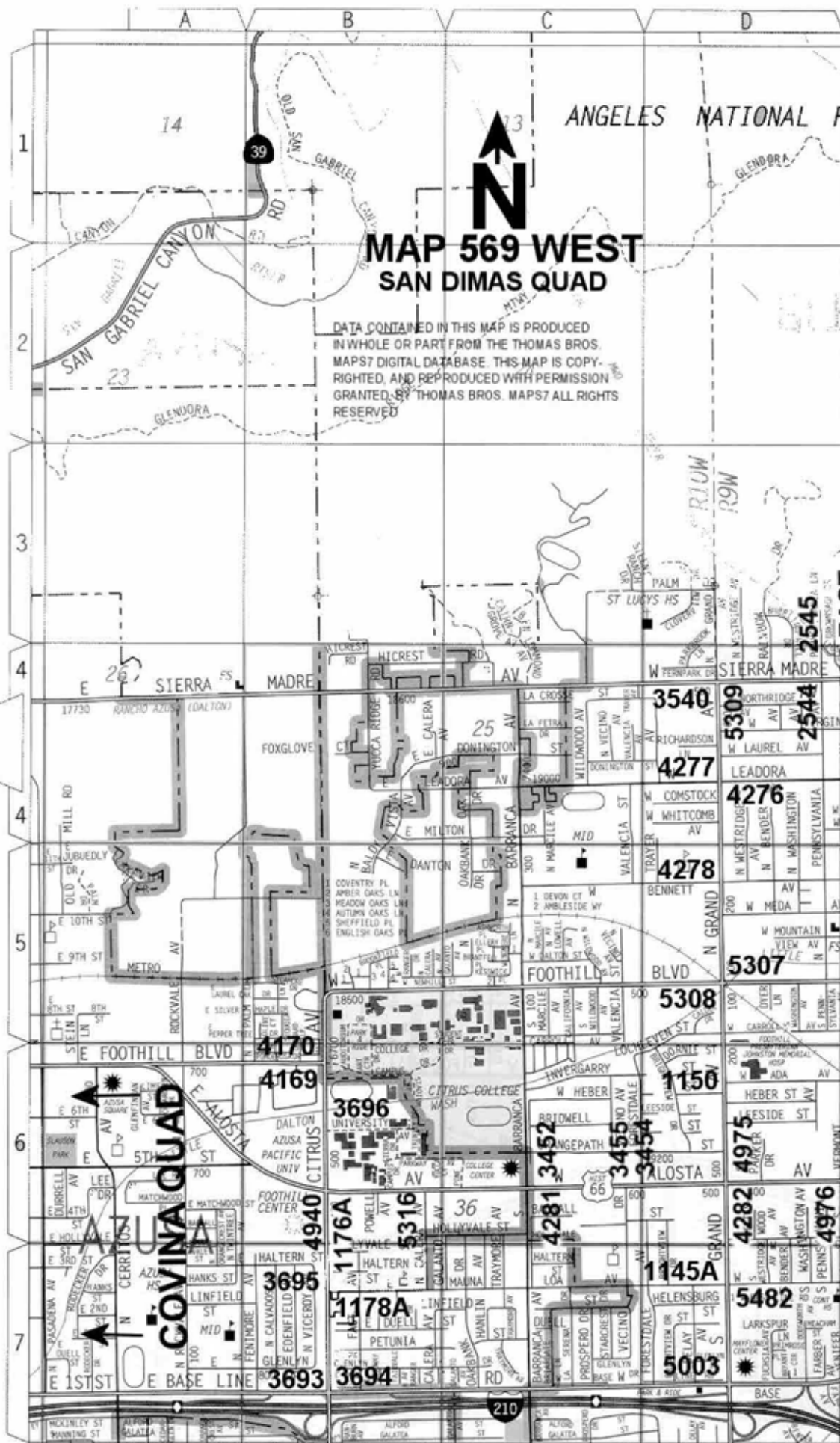
MAP 569 WEST SAN DIMAS QUAD

DATA CONTAINED IN THIS MAP IS PRODUCED IN WHOLE OR PART FROM THE THOMAS BROS. MAPS7 DIGITAL DATABASE. THIS MAP IS COPYRIGHTED, AND REPRODUCED WITH PERMISSION GRANTED BY THOMAS BROS. MAPS7 ALL RIGHTS RESERVED



14

ANGELES NATIONAL FOR



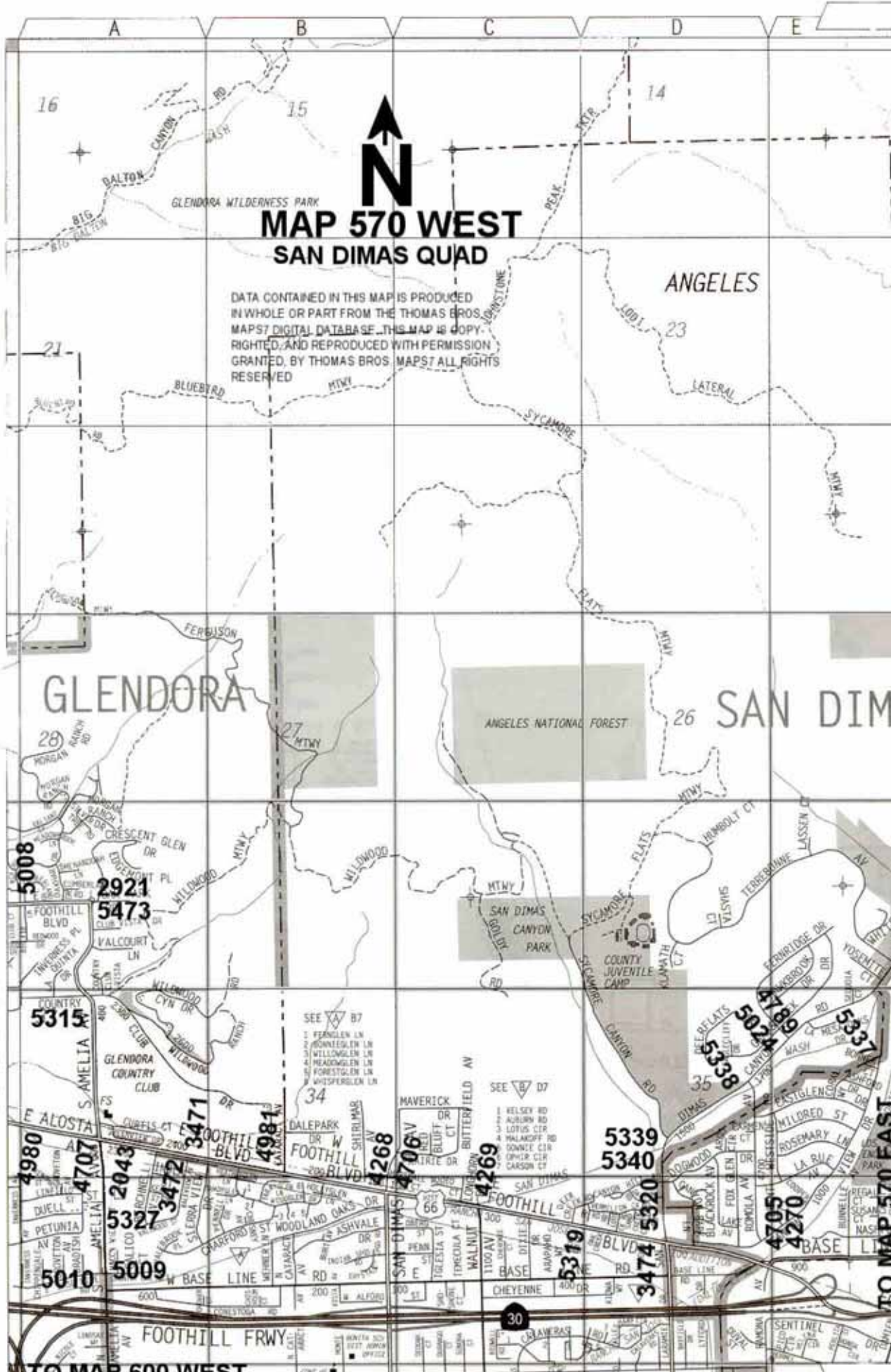
COVINA QUAD

TO MAP 596 EAST
TO MAP 569 EAST
TO MAP 599 WEST

TO MAP 599 WEST

MAP 570 WEST SAN DIMAS QUAD

DATA CONTAINED IN THIS MAP IS PRODUCED IN WHOLE OR PART FROM THE THOMAS BROS. MAPS 7 DIGITAL DATABASE. THIS MAP IS COPY RIGHTED, AND REPRODUCED WITH PERMISSION GRANTED, BY THOMAS BROS. MAPS. ALL RIGHTS RESERVED.



TO MAP 569 EAST

TO MAP 570 EAST

TO MAP 600 WEST

E F G H J

13 18 17 20

SAN DIMAS RESERVOIR MARSHALL CANYON COUNTY PARK (SITE)

NATIONAL FOREST

24 9 20



MAP 570 EAST SAN DIMAS QUAD

DATA CONTAINED IN THIS MAP IS PRODUCED IN WHOLE OR PART FROM THE THOMAS BROS. MAPS 7 DIGITAL DATABASE. THIS MAP IS COPYRIGHTED AND REPRODUCED WITH PERMISSION GRANTED BY THOMAS BROS. MAPS. ALL RIGHTS RESERVED.

SAN DIMAS

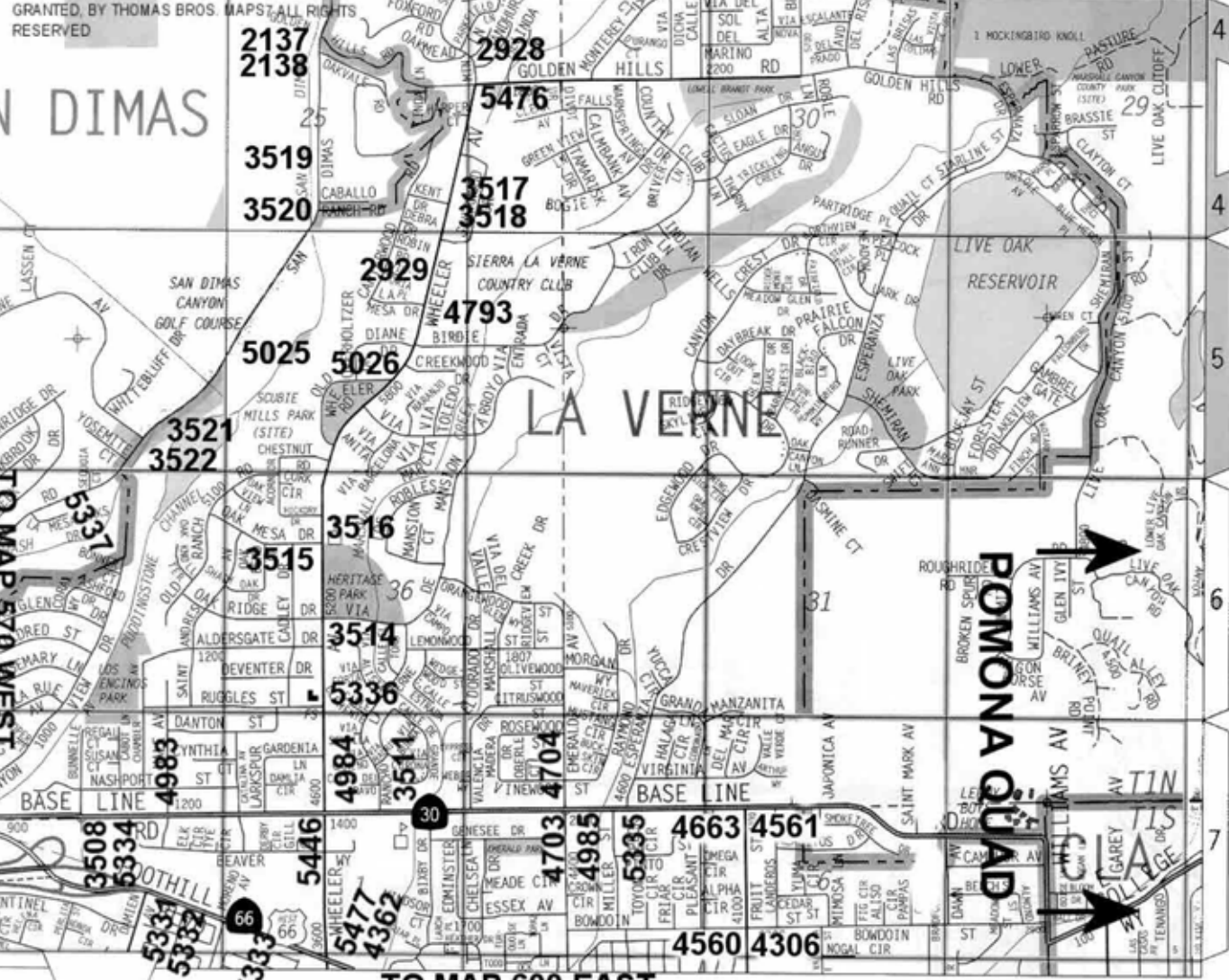
SAN DIMAS CANYON GOLF COURSE

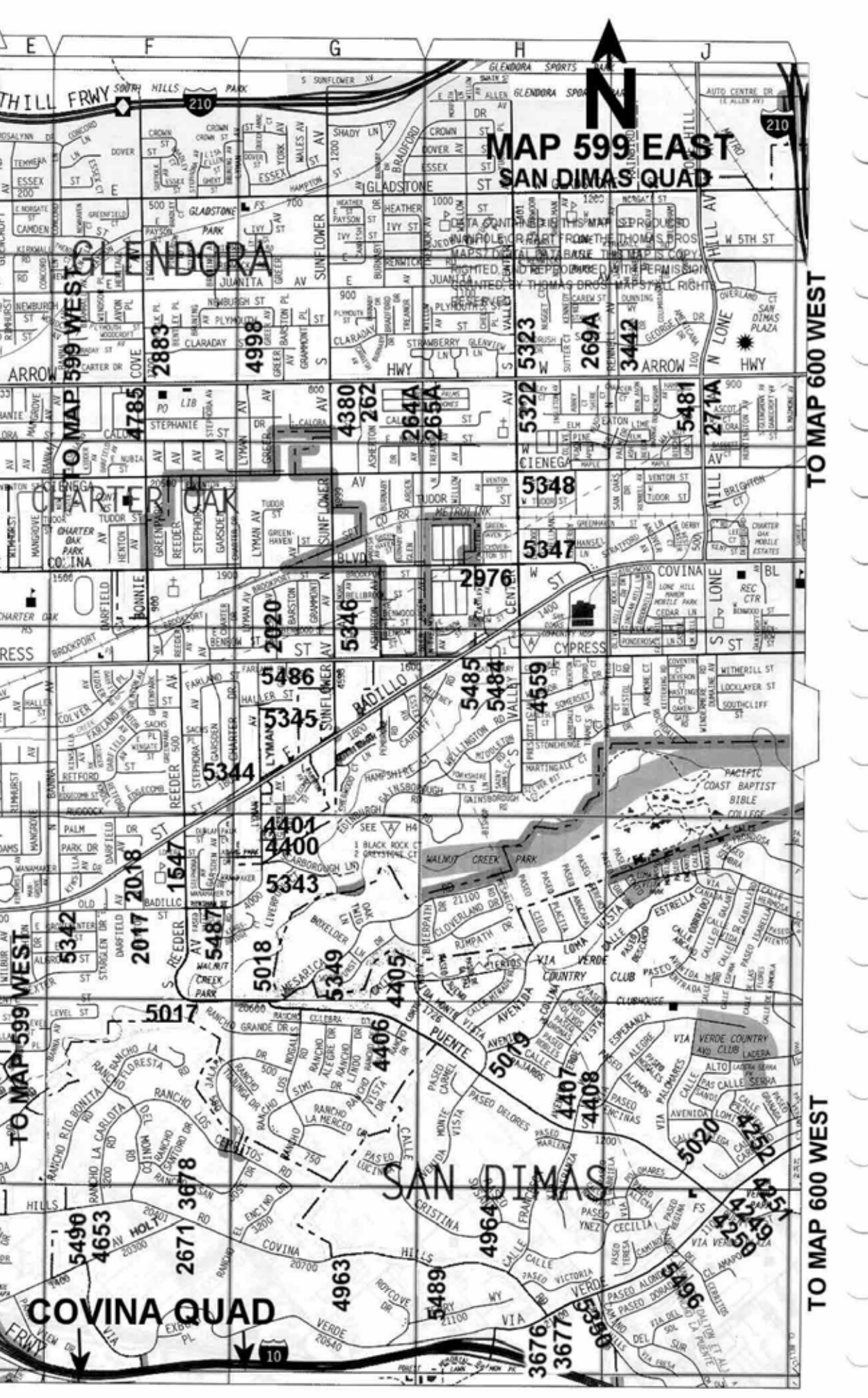
TO MAP 570 WEST

TO MAP 600 EAST

POMONA QUAD

TO MAP 570 WEST
TO MAP 600 EAST





**MAP 599 EAST
SAN DIMAS QUAD**



GLENDORA

SAN DIMAS

COVINA QUAD

TO MAP 599 WEST

TO MAP 600 WEST

TO MAP 599 WEST

TO MAP 600 WEST

TO MAP 599 WEST

TO MAP 600 WEST

TO MAP 599 WEST

TO MAP 599 WEST

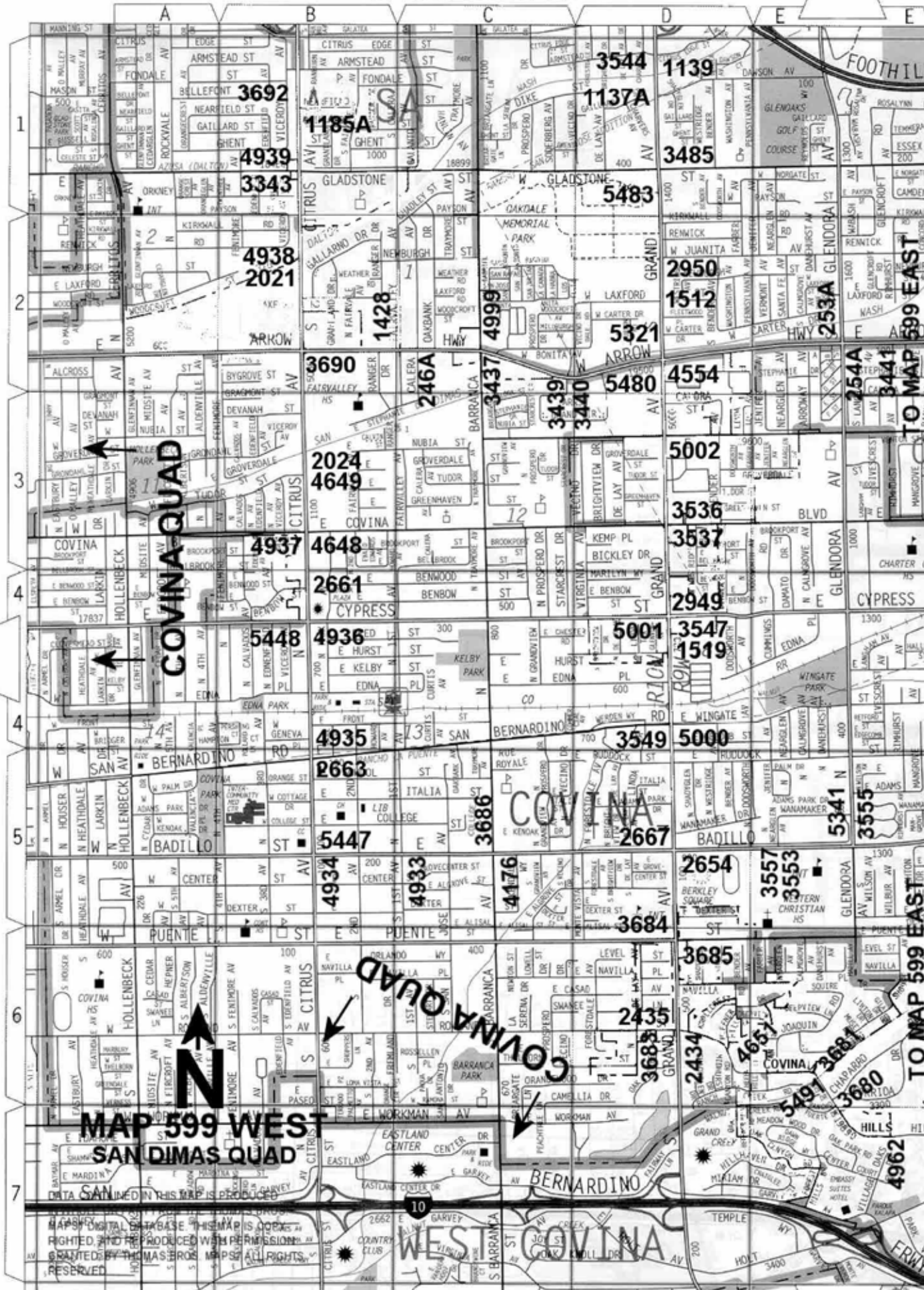
TO MAP 599 WEST

TO MAP 599 WEST

TO MAP 599 WEST

Map showing street names and lot numbers. Street names include: SUNFLOWER ST, GLADSTONE ST, SHADY LN, BRADFORD ST, HEATHER ST, IVY ST, JUANITA ST, CLARADAY ST, LYMAN ST, TUDOR ST, BROADPORT ST, REEDER ST, FARLAND ST, COVINA ST, VERDE ST, and others. Lot numbers are scattered throughout the grid, such as 4998, 4785, 4380, 262, 264A, 265A, 5322, 5323, 269A, 3442, 5481, 271A, 5348, 5347, 2976, 5486, 5345, 5485, 5484, 4559, 5344, 4401, 4400, 5343, 5018, 5349, 4405, 4406, 5019, 4407, 4408, 5020, 5490, 4653, 2671, 3678, 4963, 5489, 4964, 3676, 3677, 3678, 4252, 4250, 4249, 4250, 4251.

TO MAP 569 WEST



COVINA QUAD

COVINA QUAD

MAP 599 WEST
SAN DIMAS QUAD

WEST COVINA

DATA SAN DIMAS IN THIS MAP IS PRODUCED BY THE SAN DIMAS CITY ENGINEER'S OFFICE. ALL RIGHTS RESERVED.

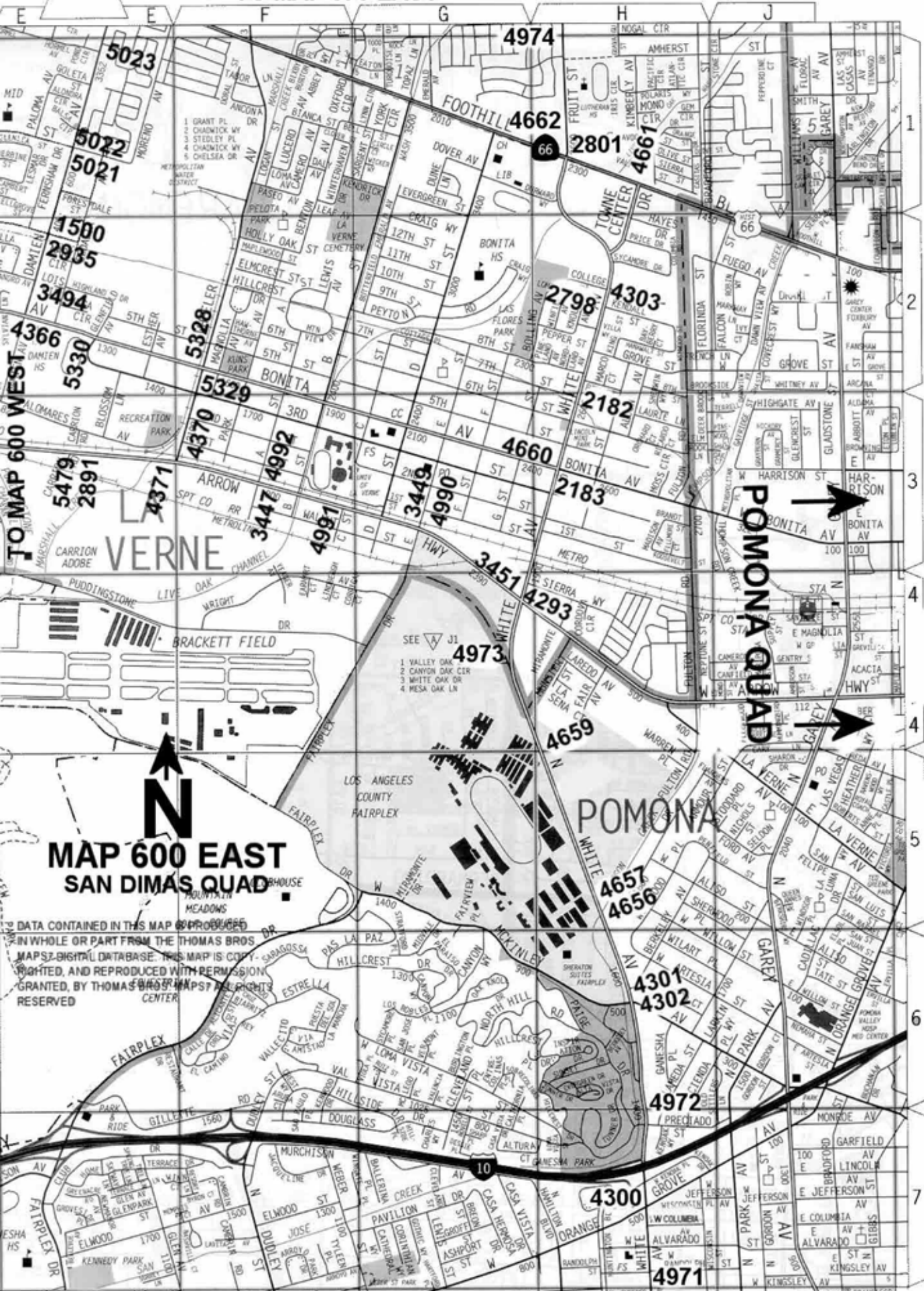
MAPS DIGITAL DATABASE THIS MAP IS PRODUCED WITH PERMISSION BY THE SAN DIMAS CITY ENGINEER'S OFFICE. ALL RIGHTS RESERVED.

TO MAP 599 EAST

TO MAP 599 EAST

TO MAP 599 EAST

TO MAP 570 EAST



TO MAP 600 WEST

MAP 600 EAST SAN DIMAS QUAD



DATA CONTAINED IN THIS MAP IS DERIVED IN WHOLE OR PART FROM THE THOMAS BROS MAPS-DIGITAL DATABASE. THIS MAP IS COPYRIGHTED, AND REPRODUCED WITH PERMISSION GRANTED, BY THOMAS BROS MAPS. ALL RIGHTS RESERVED.

- SEE A-1 J1
- 1 VALLEY OAK
 - 2 CANYON OAK CIR
 - 3 WHITE OAK DR
 - 4 MESA OAK LN

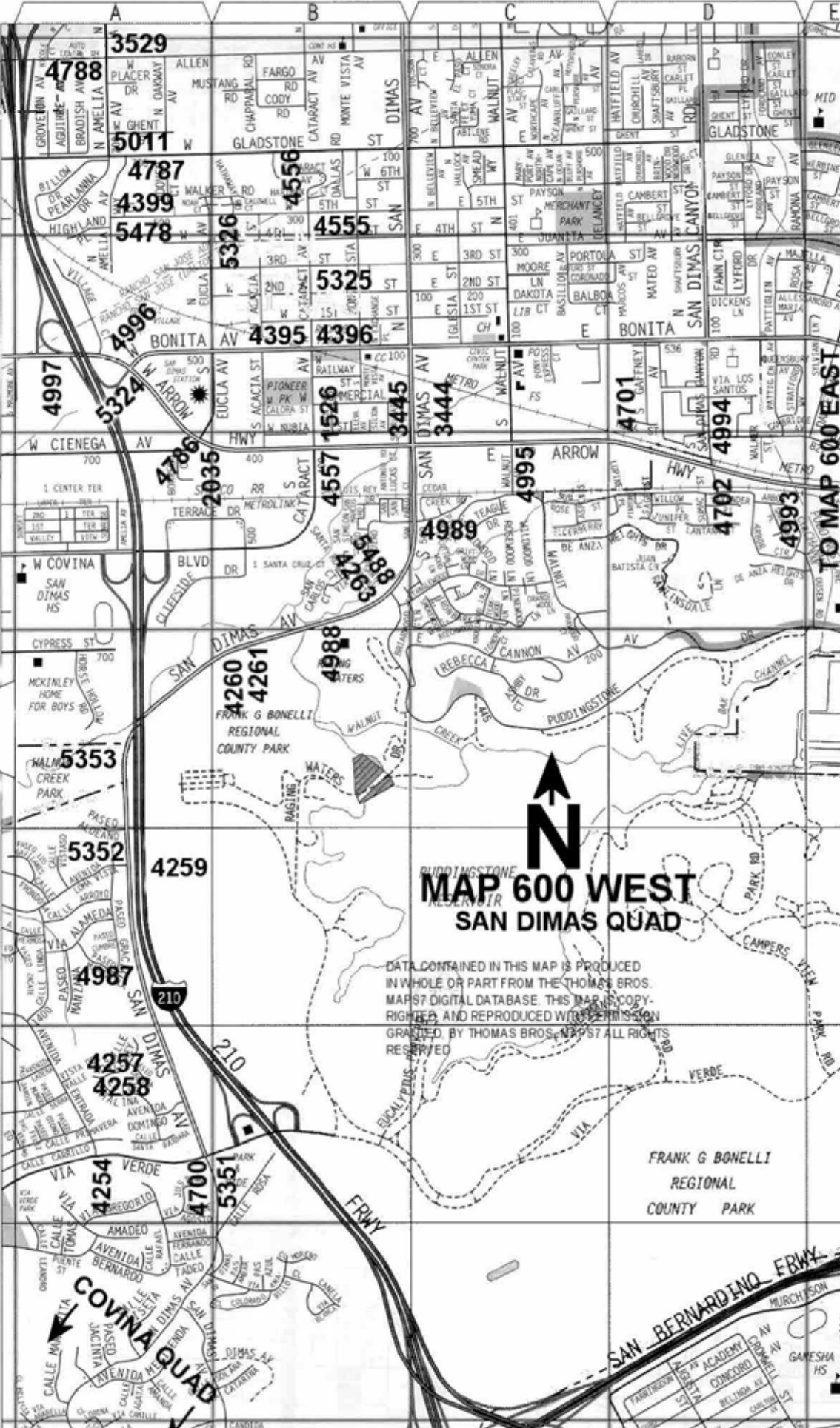
TO MAP 640 EAST

TO MAP 570 WEST

TO MAP 599 EAST

TO MAP 599 EAST

TO MAP 600 EAST



N

MAP 600 WEST
SAN DIMAS QUAD

DATA CONTAINED IN THIS MAP IS PRODUCED IN WHOLE OR PART FROM THE THOMAS BROS. MAPS® DIGITAL DATABASE. THIS MAP IS COPY-RIGHTED AND REPRODUCED WITH PERMISSION GRANTED BY THOMAS BROS. MAPS®. ALL RIGHTS RESERVED.

FRANK G BONELLI
 REGIONAL
 COUNTY PARK

3529
 4788
 5011

4787
 4399
 5478

4997
 5324
 4996

4786
 2035

5353
 5352

4259

4987

4257
 4258

4254
 4700
 5351

COVINA QUAD

4556
 4555

5325
 4395
 4396

1526
 4557

4260
 4261

4988

4259

4987

4257
 4258

4254
 4700
 5351

COVINA QUAD

4556
 4555

5325
 4395
 4396

1526
 4557

4260
 4261

4988

4259

4987

4257
 4258

4254
 4700
 5351

COVINA QUAD

4556
 4555

5325
 4395
 4396

1526
 4557

4260
 4261

4988

4259

4987

4257
 4258

4254
 4700
 5351

COVINA QUAD

4556
 4555

5325
 4395
 4396

1526
 4557

4260
 4261

4988

4259

4987

4257
 4258

4254
 4700
 5351

COVINA QUAD

4556
 4555

5325
 4395
 4396

1526
 4557

4260
 4261

4988

4259

4987

4257
 4258

4254
 4700
 5351

COVINA QUAD

TO MAP 640 WEST GOVINA QUAD

POMONA QUAD

OTTERBEIN QUAD



MAP 640 EAST
SAN DIMAS QUAD

DATA CONTAINED IN THIS MAP IS PRODUCED IN WHOLE OR PART FROM THE THOMAS BROS. MAPS 7 DIGITAL DATABASE. THIS MAP IS COPY RIGHTED AND REPRODUCED WITH PERMISSION GRANTED BY THOMAS BROS. MAPS. ALL RIGHTS RESERVED.

- SEE J4
- 1 CRESTHAVEN LN
 - 2 GREENWEDGE LN
 - 3 BRIDGEMONT LN
 - 4 FALLBROOK LN
 - 5 ASHBROOK LN



QUAD YEAR	ELEV FOOT/METER	DESCRIPTION	BM NUMBER
SAN DIMAS (2005)	606.075 184.732	L&T IN S CB OF (N SERV RD) ARROW HWY ON C/L PROD OAKBANK DR	G 246A
SAN DIMAS (2005)	694.802 211.776	RDBM TAG IN S CB 300MM(1FT) W/O BCR @ SW COR ARROW HWY & GLENDDORA AVE	G 253A
SAN DIMAS (2005)	697.848 212.705	RDBM TAG IN NE CB RET 2M(6.5FT) W/O BCR 13M(42.7FT) N/O C/L ARROW HWY & 18.5M(60.7FT) E/O C/L GLENDDORA AVE	G 254A
SAN DIMAS (2005)	774.420 236.044	L&T IN E SIDE CONC THRESHOLD OF LRG DOOR @ BRICK BLDG 6M(20FT) E/O BCR 8.5M(28FT) N/O CF 21M(69FT) N/O C/L ARROW HWY & 23M(75.5FT) E/O C/L SUNFLOWER AVE	G 262
SAN DIMAS (2005)	798.583 243.409	RDBM TAG IN N CB ARROW HWY 13M(42.7FT) N/O C/L & 271M(0.2MI) E/O C/L SUNFLOWER AVE (18FT W/O C/L DRWY TO HSE #1129)	G 264A
SAN DIMAS (2005)	797.996 243.230	RDBM TAG IN S CB ARROW HWY 271M(0.2MI) E/O C/L SUNFLOWER AVE @ HSE #1129	G 265A
SAN DIMAS (2005)	842.024 256.650	RDBM TAG IN N CB 38M(125FT) W/O BCR @ NW COR ARROW HWY & RENNELL AVE	G 269A
SAN DIMAS (2005)	863.548 263.210	L&T IN S CB 300MM(1FT) W/O BCR @ SW COR ARROW HWY & LONE HILL AVE	G 271A
SAN DIMAS (2005)	668.741 203.833	L&SPK IN S CB 3M(10FT) E/O BCR @ SE COR GRAND AVE & DAWSON AVE MKD (SD 301)	G 1137A
SAN DIMAS (2005)	666.306 203.091	L&BN IN CONC BASE OF SE LEG EDISON TOWER #238 D6 40M(131FT) N/O BIG DALTON WASH & 21M(69FT) W/O C/L GRAND AVE (125FT S/O ARMSTEAD ST)	G 1139
SAN DIMAS (2005)	691.908 210.894	L&SPK IN S CB 1.5M(5FT) E/O BCR @ SE COR GRAND AVE & MAUNA LOA AVE	G 1145A
SAN DIMAS (2005)	713.590 217.503	L&T IN W CB (SERV RD) 300MM(1FT) S/O BCR @ SW COR HEBER ST & GRAND AVE	G 1150
BASELINE (2005)	618.932 188.651	L&SPK IN E CB 3M(9.8FT) E/O BCR @ SE COR CITRUS AVE & ALOSTA AVE	G 1176A
BASELINE (2005)	611.701 186.447	RDBM TAG N CB 1.8M(6FT) E/O BCR @ NE COR CITRUS AVE & MAUNA LOA AVE	G 1178A
BASELINE (2005)	594.125 181.090	L&BR IN S CB 300MM(1FT) E/O BCR @ SE COR CITRUS AVE & NEARFIELD ST	G 1185A
SAN DIMAS (2005)	599.457 182.715	L&BN IN CTR CB RET @ SE COR FAIRVALLEY AVE & ARROW HWY (SERV RD) 9M(29.5FT) E/O & 6.85M(21.3FT) S/O C/L (S SERV RD INT)	G 1428
BASELINE (2005)	787.606 240.063	MWD BR MON IN HDWL 2.5M(8.2FT) N/O N RAIL SPRR 23M(75.5FT) S/O C/L MT VERNON AVE & 105M(344FT) E/O C/L ROSELAWN ST MKD (62D 1933)	G 1469
SAN DIMAS (2005)	1,063.786 324.243	L&BR IN W CB 300MM(1FT) N/O BCR @ NW COR DAMIEN AVE & JUANITA AVE	G 1500

QUAD YEAR	ELEV FOOT/METER	DESCRIPTION	BM NUMBER
SAN DIMAS (2005)	659.833 201.118	L&BN IN E CB 1M(3.3FT) S/O BCR @ SE COR GRAND AVE & FLEETWOOD PL	G 1512
SAN DIMAS (2005)	625.705 190.715	NAIL IN CHIS (X) N CB 3.5M(11.5FT) W/O BCR @ NW COR GRAND AVE & HURST ST MKD (SD 187)	G 1519
SAN DIMAS (2005)	923.521 281.490	L&BN IN W CB 40M(131FT) N/O BCR @ NW COR ARROW HWY & CATARACT AVE	G 1526
SAN DIMAS (2005)	682.685 208.083	RDBM TAG IN W CB 600MM(2FT) N/O BCR @ NW COR REEDER ST & OLD BADILLO ST	G 1547
SAN DIMAS (2005)	665.583 202.870	L&RDBM TAG IN N CB 300MM(1FT) E/O BCR @ NW COR OLD BADILLO ST & DARFIELD AVE	G 2017
SAN DIMAS (2005)	667.086 203.328	RDBM TAG N CB 600MM(2FT) E/O BCR @ NE COR OLD BADILLO ST & DARFIELD AVE	G 2018
SAN DIMAS (2005)	720.233 219.528	L&T IN S CB @ BCR @ SW COR CYPRESS ST & LYMAN AVE	G 2020
BASELINE (2005)	587.007 178.920	FC MON IN SW WINGWALL OF BRIDGE ON CITRUS AVE OVER BIG DALTON WASH 11.3M(37FT) W/O C/L & 402M(0.25MI) S/O GLADSTONE ST MKD (BM 81-39)	G 2021
BASELINE (2005)	574.660 175.157	L&SPK IN W CB CITRUS AVE 13.4M(44FT) W/O C/L & 17.4M(57FT) N/O N END BRIDGE OVER SAN DIMAS WASH (NR C. B.)	G 2024
SAN DIMAS (2005)	898.066 273.731	RDBM TAG IN W CB 300MM(1FT) N/O BCR @ NW COR ARROW HWY & EUCLA AVE	G 2035
BASELINE (2005)	957.001 291.695	RDBM TAG E CB 300MM(1FT) N/O BCR @ SE COR FOOTHILL BLVD & AMELIA AVE	G 2043
BASELINE (2005)	800.605 244.025	CS MON IN WELL 300MM(1FT) DN ON C/L 2ND ST IN MEDIAN 750MM(2.5FT) W/O END & 95M(312FT) E/O C/L HWY 71 MKD (BM 11-85)	G 2076
SAN DIMAS (2005)	1,260.611 384.235	BT SPK IN IP IN RD WELL 400MM(1.3FT) DN ON C/L GOLDEN HILLS RD 11M(36FT) E/O C/L SAN DIMAS CYN RD	G 2137
SAN DIMAS (2005)	1,258.237 383.512	USGS MON IN WALL OF GAGING STA 5M(16.4FT) N/O SE COR @ NW COR SAN DIMAS CYN RD & GOLDEN HILLS RD MKD (GAGING STA) 1.7M(5.6FT) W/O GUARD RAIL	G 2138
BASELINE (2005)	1,084.195 330.464	CS MON IN WELL 600MM(2FT) N/O N CF 4.5M(14.8FT) W/O BCR @ NW COR WHITE AVE & 7TH ST MKD (BM 13-8 1952 RE 63)	G 2182
BASELINE (2005)	1,066.118 324.954	L&BN IN W CB 2M(6.5FT) S/O BCR @ SW COR BONITA AVE & WHITE AVE	G 2183
BASELINE (2005)	582.544 177.560	RDBM TAG IN E CB 300MM(1FT) N/O BCR @ NE COR GRAND AVE & COVINA HILLS RD	G 2434
BASELINE (2005)	582.932 177.678	CS TAG IN W CB 300MM(1FT) S/O BCR @ NW COR GRAND AVE & ROWLAND AVE	G 2435
SAN DIMAS (2005)	836.417 254.941	L&T IN N CB 12M(39FT) E/O BCR @ NE COR SIERRA MADRE AVE & PENNSYLVANIA AVE 7.5M(24FT) N/O & 17M(56FT) E/O C/L INT	G 2544

QUAD YEAR	ELEV FOOT/METER	DESCRIPTION	BM NUMBER
SAN DIMAS (2005)	835.006 254.511	L&T IN S CB 1.5M(5FT) E/O BCR @ SE COR SIERRA MADRE AVE & PENNSYLVANIA AVE	G 2545
SAN DIMAS (2005)	860.206 262.192	RDBM TAG W CB 300MM(1FT) S/O OF END @ SW COR VISTA BONITA AVE & SIERRA MADRE AVE 13M(42.7FT) S/O & 4.5M(14.8FT) W/O C/L INT	G 2546
SAN DIMAS (2005)	862.665 262.941	RAM SET IN E CB 300MM(1FT) S/O END @ SE COR VISTA BONITA AVE & SIERRA MADRE AVE 13M(42.7FT) S/O & 4.5M(14.8FT) E/O C/L INT	G 2547
SAN DIMAS (2005)	1,011.940 308.440	FC BM MON IN N HDWL CH 52M(171FT) W/O & 9M(29.5FT) N/O C/L INT PALM DR & ENGLEWILD DR MKD (BM 85-67) W SIDE CHANNEL	G 2555
SAN DIMAS (2005)	991.658 302.258	CS MON IN WELL 250MM(0.8FT) DN @ C/L INT LORAINA AVE (S) & PALM DR MKD (1/4 COR T1N, SEC 20,29,R9W RE 2177)	G 2556
SAN DIMAS (2005)	955.802 291.329	BT SPK IN W CB 3.5M(11.5FT) S/O BCR @ SW COR LORAINA AVE & SIERRA MADRE AVE	G 2558
SAN DIMAS (2005)	904.448 275.677	RDBM TAG IN E CB @ N P/L HSE #170 N/O VALLEY CTR AVE 7M(23FT) E/O C/L & 104M(341FT) N/O FOREST OAKS DR	G 2566
SAN DIMAS (2005)	885.258 269.827	L&T IN N CB 300MM(1FT) W/O BCR @ NE COR VALLEY CENTER AVE & FOOTHILL BLVD	G 2567
BASELINE (2005)	591.433 180.269	CSBM MON IN WINGWALL OF BRIDGE #1408 @ NE COR GRAND AVE & BADILLO ST 19.5M(64FT) N/O & 16M(52.5FT) E/O C/L INT MKD (BM 17-8B 1963)	G 2654
BASELINE (2005)	563.175 171.656	USC&GS BR CAP IN S END C. B. 12.5M(41FT) E/O & 10.5M(34.4FT) S/O C/L INT CITRUS AVE & BENBOW ST MKD (K 1149 1961)	G 2661
BASELINE (2005)	556.036 169.480	RDBM TAG IN CB 3.5M(11.5FT) N/O BCR @ NE COR CITRUS AVE & SAN BERNADINO RD	G 2663
BASELINE (2005)	589.933 179.812	RDBM TAG S CB 1.5M(5FT) W/O BCR @ SW COR GRAND AVE & BADILLO ST (IN C. B.)	G 2667
SAN DIMAS (2005)	654.649 199.538	CS MON IN WELL 300MM(1FT) DN 6M(19.7FT) W/O & 3M(9.8FT) N/O C/L INT COVINA HILLS RD & HOLT AVE MKD (BM 17-13 1952 RE 63)	G 2671
BASELINE (2005)	848.271 258.554	L&BN IN E CB 300MM(1FT) N/O BCR @ NE COR WHITE AVE & 2ND ST	G 2787
BASELINE (2005)	860.388 262.247	CS MON IN WELL 175MM(0.6FT) DN IN GUTTER 5M(16.4FT) E/O BCR @ SW COR WHITE AVE & HOLT AVE MKD (BM 13-1 1952)	G 2788
BASELINE (2005)	1,104.733 336.724	L&BN IN E CB 300MM(1FT) S/O BCR @ SE COR WHITE AVE & KENDAL ST	G 2798
BASELINE (2005)	1,141.969 348.073	BT SPK IN W CB 17M(56FT) N/O BCR @ NW COR FRUIT ST & FOOTHILL BLVD	G 2801
SAN DIMAS (2005)	734.445 223.860	RDBM TAG IN S CB 300MM(1FT) E/O BCR @ SE COR ARROW HWY & BONNIE COVE AVE	G 2883
SAN DIMAS (2005)	1,017.267 310.064	L&BN W END CONC HDWL CULV 13.5M(44.3FT) N/O N CF ARROW HWY 26M(85.3FT) N/O C/L & 90M(295FT) W/O C/L CARRION RD (3.5M(11.5FT) S/O S RAIL SFRR)	G 2891

QUAD YEAR	ELEV FOOT/METER	DESCRIPTION	BM NUMBER
SAN DIMAS (2005)	987.858 301.100	USC&GS MON 150MM(0.5FT) UP 6.5M(21.3FT) N/O C/L FOOTHILL BLVD & 1M(3.3FT) W/O C/L AMELIA AVE PROD MKD (S 62 1923)	G 2921
SAN DIMAS (2005)	906.860 276.412	FC MON IN N HDWL CONC DRAIN 12M(39.4FT) N/O C/L FOOTHILL BLVD & 48M(158FT) W/O C/L LONE HILL RD MKD (BM 82-105)	G 2922
SAN DIMAS (2005)	1,410.170 429.821	LS TAG #2870 IN N CB 100MM(4IN) W/O BCR @ NW COR WHEELER AVE & GOLDEN HILLS RD	G 2928
SAN DIMAS (2005)	1,327.215 404.536	CSBM MON FL 1.5M(4.9FT) N/O SW LEG EDISON TOWER #232-D4 61M(200FT) S/O C/L LA MESA DR & 15M(49.2FT) E/O C/L WHEELER AVE MKD (BM 53-3 1958)	G 2929
SAN DIMAS (2005)	1,062.874 323.965	L&PK IN E CB 300MM(1FT) S/O BCR @ SE COR DAMIEN AVE & JUANITA AVE	G 2935
SAN DIMAS (2005)	630.499 192.177	RDBM TAG IN E CB 300MM(1FT) S/O BCR @ NE COR GRAND AVE & CYPRESS ST	G 2949
SAN DIMAS (2005)	662.595 201.960	L&T IN E CB @ BCR SE COR GRAND AVE & JUANITA AVE	G 2950
BASELINE (2005)	826.001 251.766	CS MON IN WELL 200MM(0.7FT) DN @ SW COR 2ND ST & OAK AVE 15M(49.2FT) W/O & 9.5M(31.2FT) S/O C/L INT MKD (BM 11-84A 1962)	G 2955
BASELINE (2005)	852.790 259.931	CSBM MON IN HDWL 2M(6.5FT) S/O CF W END OF BRIDGE OVER WHITE AVE 25.5M(84FT) W/O C/L & 8M(26.2FT) S/O C/L 1ST ST MKD (BM 11-83A 1962 RE 5869)	G 2956
SAN DIMAS (2005)	1,026.254 312.803	RDBM TAG IN CB RET 2M(6.5FT) E/O BCR @ SW COR PALM DR & LIVE OAK AVE	G 2962
SAN DIMAS (2005)	1,011.253 308.231	RDBM TAG IN S CB PALM DR 6M(19.7FT) S/O C/L & 52M(171FT) W/O C/L PROD ENGLEWILD DR (NR C/L FC CHANNEL)	G 2963
SAN DIMAS (2005)	1,005.176 306.379	RDBM TAG N CB 1M(3.3FT) W/O BCR @ NW COR SIERRA MADRE AVE & GLENDORA MTN RD	G 2965
SAN DIMAS (2005)	784.374 239.078	RDBM TAG IN N CB 300MM(1FT) W/O BCR @ NW COR VALLEY CTR AVE & COVINA BLVD	G 2976
BASELINE (2005)	590.798 180.076	BM MON IN CB 19M(62.3FT) N/O BCR @ NW COR CITRUS AVE & GLADSTONE ST MKD (AZUSA BM 66-11) NR N END C. B.	G 3343
SAN DIMAS (2005)	614.476 187.293	L&T IN W CB 300MM(1FT) S/O BCR @ NW COR BARRANCA AVE & ARROW HWY	G 3437
SAN DIMAS (2005)	633.440 193.073	FC MON @ E END OF BRIDGE OVER SAN DIMAS WASH 13.5M(44.3FT) S/O C/L ARROW HWY & 343M(0.2MI) E/O BARRANCA AVE MKD (BM 087-1950)	G 3439
SAN DIMAS (2005)	634.551 193.412	L&BN E END OF BRIDGE OVER SAN DIMAS WASH 14M(46FT) N/O C/L ARROW HWY & 71M(233FT) E/O C/O ARROW GRAND CIR W MKD (BM 087-01985 1965)	G 3440
SAN DIMAS (2005)	711.550 216.881	RDBM TAG N CB ARROW HWY 13M(42.7FT) N/O C/L & 1M(3.3FT) E/O DRWY TO TRAILER PARK #201 (500FT W/O BANNA AVE)	G 3441

QUAD YEAR	ELEV FOOT/METER	DESCRIPTION	BM NUMBER
SAN DIMAS (2005)	842.934 256.927	RAMSET & RE TAG #6956 IN S CB 32M(105FT) W/O BCR @ SW COR ARROW HWY & RENNELL AVE	G 3442
SAN DIMAS (2005)	926.712 282.463	L&BN IN CTR OF C. B. 300MM(1FT) W/O CF 2.5M(8.2FT) N/O BCR @ NW COR ARROW HWY & SAN DIMAS AVE	G 3444
SAN DIMAS (2005)	926.336 282.348	L&BN IN E C. B. 300MM(1FT) S/O BCR @ SE COR ARROW HWY & SAN DIMAS AVE	G 3445
SAN DIMAS (2005)	1,036.564 315.946	RDBM TAG IN W CB 300MM(1FT) S/O BCR @ SW COR ARROW HWY & A ST	G 3447
SAN DIMAS (2005)	1,044.620 318.401	RDBM TAG IN E CB 300MM(1FT) S/O BCR @ SE COR ARROW HWY & FAIRPLEX DR (E ST TO N)	G 3449
BASELINE (2005)	1,039.018 316.694	RDBM TAG IN W CB ARROW HWY 300MM(1FT) N/O BCR 12M(39.4FT) W/O C/L & 18.5M(60.7FT) S/O C/L WHITE AVE	G 3451
BASELINE (2005)	658.518 200.717	AZUSA CITY MON IN W CB 300MM(1FT) N/O BCR @ SW COR ALOSTA AVE & BARRANCA AVE MKD (AZUSA BM 66-155)	G 3452
BASELINE (2005)	680.215 207.330	L&SPK IN W CB 1.5M(5FT) S/O BCR @ SW COR ALOSTA AVE & VECINO AVE	G 3454
BASELINE (2005)	680.819 207.514	L&SPK IN E CB 1.5M(5FT) S/O BCR @ SE COR ALOSTA AVE & VECINO AVE	G 3455
BASELINE (2005)	770.765 234.930	L&BN IN S CB 300MM(1FT) E/O BCR @ SE COR ALOSTA AVE & LE MAR PARK DR	G 3462
BASELINE (2005)	784.403 239.087	L&BN IN S CB 300MM(1FT) W/O BCR @ SW COR ALOSTA AVE & ELWOOD AVE	G 3463
BASELINE (2005)	785.028 239.277	L&BN IN S CB 10.5M(34.4FT) E/O BCR @ SE COR ALOSTA AVE & ELWOOD AVE	G 3464
BASELINE (2005)	800.412 243.966	L&BN IN N CB 300MM(1FT) E/O BCR @ NE COR ALOSTA AVE & LORAIN AV	G 3466
BASELINE (2005)	819.562 249.803	L&BN IN W CB 1M(3.3FT) S/O BCR @ SW COR ALOSTA AVE & HUNTERS TRAIL	G 3467
BASELINE (2005)	819.562 249.803	L&BN IN E CB 1M(3.3FT) S/O BCR @ SE COR ALOSTA AVE & HUNTERS TRAIL	G 3468
BASELINE (2005)	888.977 270.961	RDBM TAG IN W CB 9M(29.5FT) S/O BCR @ SW COR ALOSTA AVE & LONE HILL AVE	G 3470
BASELINE (2005)	981.323 299.108	L&BR IN N CB (S SERV RD) FOOTHILL BLVD 4.3M(14FT) N/O C/L ON C/L PROD VALEVIEW ST	G 3471
BASELINE (2005)	980.957 298.997	BT SPK IN CB 1M(3.3FT) S/O BCR @ SW COR FOOTHILL BLVD (SERV RD) & VALEVIEW ST	G 3472
BASELINE (2005)	1,063.608 324.189	RDBM TAG IN N CB 12M(39.4FT) W/O BCR @ NW COR FOOTHILL BLVD & SAN DIMAS CYN RD	G 3474
SAN DIMAS (2005)	663.997 202.387	CSBM MON FL IN ISLAND 16M(52.5FT) N/O & 3.5M(11.5FT) E/O C/L INT GLADSTONE ST & GRAND AVE MKD (11-34A 1965 RE 5869)	G 3485

QUAD YEAR	ELEV FOOT/METER	DESCRIPTION	BM NUMBER
SAN DIMAS (2005)	1,052.778 320.888	L&BR IN W CB 300MM(1FT) S/O BCR @ NW COR DAMIEN AVE & BONITA AV	G 3494
BASELINE (2005)	1,135.095 345.978	CS MON IN WELL 200MM(0.7FT) DN ON C/L BASELINE RD 6.5M(21.3FT) E/O C/L BUNNELLE AVE MKD (SEC COR 35-36-2-1 R9W ,T1N, RE 5769)	G 3508
BASELINE (2005)	1,170.409 356.742	FC MON S CB BASELINE RD 13M(42.7FT) S/O C/L & 18M(59FT) W/O C/L BRIDGE OVER MARSHALL CREEK 72M(236FT) W/O C/L BIXBY DR MKD (BM 095-21715 1967)	G 3511
SAN DIMAS (2005)	1,227.523 374.150	L&PK IN W CB 300MM(1FT) S/O BCR @ SW COR WHEELER AVE & ALDERGATE DR	G 3514
SAN DIMAS (2005)	1,255.927 382.808	L&BN IN W CB 300MM(1FT) N/O BCR @ SW COR WHEELER AVE & OAK MESA DR MKD (BM)	G 3515
SAN DIMAS (2005)	1,258.231 383.510	L&BN IN W CB 2M(6.5FT) N/O BCR @ NW COR WHEELER AVE & OAK MESA DR MKD (BM)	G 3516
SAN DIMAS (2005)	1,361.904 415.110	L&BN IN W CB 1.5M(5FT) S/O BCR @ SW COR WHEELER AVE & KENT DR MKD (BM)	G 3517
SAN DIMAS (2005)	1,366.228 416.428	L&BN IN W CB 1.5M(5FT) N/O BCR @ NW COR WHEELER AVE & KENT DR MKD (BM)	G 3518
SAN DIMAS (2005)	1,210.975 369.106	L&BN N CB CABALLO RANCH RD 6M(19.7FT) E/O END CB 4.5M(14.8FT) N/O C/L & 26M(85FT) E/O C/L SAN DIMAS CYN RD MKD (BM)	G 3519
SAN DIMAS (2005)	1,210.020 368.815	L&BN IN S CB CABALLO RANCH RD 2M(6.5FT) E/O END CB 4.5M(14.8FT) S/O C/L & 23.5M(77FT) E/O C/L SAN DIMAS CYN RD	G 3520
SAN DIMAS (2005)	1,170.365 356.728	FC BM DISK UP 1M(3.3FT) IN N END OF WALL @ DAM SPILL WAY 81M(266FT) N/O C/L TERREBONNE AVE & 28M(92FT) E/O C/L INT SAN DIMAS CYN RD MKD (BM 089-00175 1965)	G 3521
SAN DIMAS (2005)	1,161.023 353.881	L&BN IN SLY CB TERREBONNE AVE 300MM(1FT) W/O BCR 6M(19.7FT) S/O C/L & 18M(59FT) WLY/O C/L SAN DIMAS CYN RD	G 3522
SAN DIMAS (2005)	927.637 282.745	L&BR IN W CB 2M(6.5FT) S/O BCR @ SW COR AMELIA AVE & AUTO CTR DR	G 3529
SAN DIMAS (2005)	639.143 194.811	RDBM TAG IN S CB 300MM(1FT) E/O BCR @ SW COR GRAND AVE & COVINA BLVD	G 3536
SAN DIMAS (2005)	638.959 194.755	RDBM TAG IN N CB 7.5M(24.6FT) W/O BCR @ NW COR GRAND AVE & COVINA BLVD	G 3537
SAN DIMAS (2005)	944.535 287.895	RDBM TAG IN E CB 1M(3.3FT) N/O BCR @ NE COR LIVE OAK AVE & SIERRA MADRE AVE	G 3538
SAN DIMAS (2005)	814.088 248.135	L&PK IN N CB 300MM(1FT) W/O BCR @ NW COR GRAND AVE & SIERRA MADRE AVE	G 3540
SAN DIMAS (2005)	669.635 204.105	FC MON @ N END OF BRIDGE OVER BIG DALTON WASH 14M(46FT) W/O C/L GRAND AVE & 98M(322FT) N/O C/L DAWSON AVE MKD (BM 081- 02910 1964)	G 3544

QUAD YEAR	ELEV FOOT/METER	DESCRIPTION	BM NUMBER
SAN DIMAS (2005)	629.512 191.876	RDBM TAG IN W CB 600MM(2FT) S/O BCR @ SW COR GRAND AVE & CYPRESS ST	G 3547
SAN DIMAS (2005)	621.980 189.580	RDBM TAG IN W CB 600MM(2FT) S/O BCR @ SW COR GRAND AVE & SAN BERNARDINO RD	G 3549
SAN DIMAS (2005)	614.033 187.158	L&N IN N CB 4.5M(14.8FT) E/O BCR @ NE COR NEARGLEN AVE & BADILLO ST	G 3553
SAN DIMAS (2005)	632.492 192.784	RDBM TAG IN S CB 4.5M(14.8FT) E/O BCR @ SE COR BADILLO ST & GLEN DORA AVE	G 3555
SAN DIMAS (2005)	614.015 187.152	L&T IN S CB BADILLO ST 12M(39.4FT) S/O C/L ON C/L PROD NEARGLEN AVE	G 3557
BASELINE (2005)	785.814 239.517	RDBM TAG IN S CB POMONA BLVD 6.5M(21.3FT) E/O E END CB 5M(16.4FT) S/O C/L & 165M(541FT) E/O C/L ROSELAWN ST	G 3668
SAN DIMAS (2005)	866.555 264.127	L&T IN E CB VIA VERDE 13M(42.7FT) E/O C/L ON C/L PROD COVINA HILLS RD MKD (BM)	G 3676
SAN DIMAS (2005)	866.477 264.103	L&T IN N CB @ W END C. B. 15M(49.2FT) W/O BCR 6M(20FT) N/O C/L COVINA HILLS RD & 37M(121FT) W/O C/L VIA VERDE MKD (BM)	G 3677
SAN DIMAS (2005)	649.182 197.871	RDBM IN CTR CONC HDWL 6M(19.7FT) W/O C/L HOLT AVE & 53M(174FT) S/O C/L COVINA HILLS RD	G 3678
SAN DIMAS (2005)	532.775 162.390	RDBM TAG IN S CB COVINA HILLS RD 1M(3.3FT) W/O BCR 8.5M(28FT) S/O C/L & 17M(55.8FT) W/O C/L RANCHO EL FUERTE DR	G 3680
SAN DIMAS (2005)	536.240 163.446	FC BR MON IN E ABUT @ SE COR OF BRIDGE #1407 OVER WALNUT CREEK 7.5M(24.6FT) N/O C/L COVINA HILLS RD MKD (BM 093-00500 1965)	G 3681
BASELINE (2005)	595.816 181.605	RDBM TAG IN W CB 1.5M(5FT) S/O BCR @ SW COR GRAND AVE & PUENTE ST	G 3684
BASELINE (2005)	597.658 182.167	RDBM TAG N CB @ C. B. 3M(10FT) E/O BCR @ NE COR GRAND AVE & PUENTE ST	G 3685
BASELINE (2005)	562.387 171.416	CSBM MON IN WELL 200MM(0.7FT) DN 3.5M(11.5FT) E/O BCR 3.4M(11FT) N/O CF @ NE COR BADILLO ST & BARRANCA AVE MKD (BM 17-7B 1960 RE 5869)	G 3686
BASELINE (2005)	580.744 177.011	RDBM IN WELL 250MM(0.8FT) DN @ C/L INT CITRUS AVE & ARROW HWY MKD (LA CO RD DEPT 1957)	G 3690
BASELINE (2005)	593.960 181.040	L&SPK IN W CB CITRUS AVE 9.1M(30FT) W/O C/L & 3M(9.8FT) S/O C/L NEARFIELD ST MKD (SD 354)	G 3692
BASELINE (2005)	601.619 183.374	L&SPK IN E CB 4.5M(14.8FT) S/O BCR @ SE COR CITRUS AVE & BASELINE RD	G 3693
BASELINE (2005)	604.129 184.139	CAL-TRANS MON IN N CB 32M(105FT) E/O BCR @ NE COR CITRUS AVE & BASELINE RD MKD (56-43 RESET)	G 3694
BASELINE (2005)	610.540 186.093	L&T IN W CB @ SW COR CITRUS AVE & MAUNALOA AVE 10.5M(34.4FT) S/O & 9M(29.5FT) W/O C/L INT	G 3695

QUAD YEAR	ELEV FOOT/METER	DESCRIPTION	BM NUMBER
BASELINE (2005)	816.449 248.854	RDBM TAG IN N CB 2ND ST 7M(23FT) N/O C/L 2M(6.5FT) W/O BOX CULV & 34M(111FT) W/O RR TRACKS 402M(0.25MI) W/O C/L OAK AVE	G 3752
BASELINE (2005)	816.469 248.861	RDBM TAG IN S CB 2ND ST 7M(23FT) S/O C/L 2M(6.5FT) W/O BOX CULV & 34M(111FT) W/O RR TRACKS 402M(0.25MI) W/O C/L OAK AVE	G 3753
BASELINE (2005)	827.272 252.153	RDBM TAG IN S CB 300MM(1FT) E/O BCR @ SE COR 2ND ST & OAK AVE	G 3754
BASELINE (2005)	838.809 255.670	RDBM TAG IN S CB 2.5M(8.2FT) W/O BCR @ SW COR 2ND ST & HAMILTON BLVD	G 3755
BASELINE (2005)	839.895 256.001	RDBM TAG IN E CB 5M(16.4FT) N/O BCR @ NE COR 2ND ST & HAMILTON BLVD	G 3756
BASELINE (2005)	848.036 258.482	RDBM TAG IN W CB 600MM(2FT) S/O BCR @ SW COR 2ND ST & WHITE AVE	G 3757
BASELINE (2005)	853.437 260.128	RDBM TAG IN S CB @ SE COR OF BRIDGE OVER WHITE AVE 23.5M(77FT) E/O C/L & 6M(19.7FT) S/O C/L 1ST ST	G 3758
BASELINE (2005)	562.851 171.558	RDBM TAG IN C. B. 5.5M(18FT) E/O BCR @ NE COR BADILLO ST & BARRANCA AVE	G 4176
SAN DIMAS (2005)	816.578 248.894	RDBM TAG IN E CB VIA VERDE 13M(42.7FT) E/O C/L & 48M(158FT) S/O C/L PUENTE ST (@ N END C. B.)	G 4249
SAN DIMAS (2005)	820.467 250.079	RDBM TAG IN W CB VIA VERDE 13M(42.7FT) W/O C/L & 23M(75FT) N/O C/L PUENTE ST (@ N END C. B.)	G 4250
SAN DIMAS (2005)	868.998 264.871	RDBM TAG IN W CB AVENIDA LOMITA 600MM(2FT) N/O BCR 6M(19.7FT) W/O C/L & 24.5M(80.4FT) N/O C/L VIA VERDE	G 4251
SAN DIMAS (2005)	872.544 265.952	RDBM TAG IN N CB VIA VERDE 13M(42.7FT) N/O C/L & 19M(62.3FT) E/O C/L AVENIDA LOMITA (IN C. B.)	G 4252
SAN DIMAS (2005)	985.456 300.368	RDBM TAG SE COR CONC EDISON VAULT @ NW COR VIA VERDE & AVENIDA ENTRADA	G 4254
SAN DIMAS (2005)	1,092.733 333.066	RDBM TAG IN SW COR DROP INLET 5.5M(18FT) E/O C/L SAN DIMAS AVE & 451M(0.3MI) N/O C/L VIA VERDE	G 4257
SAN DIMAS (2005)	1,093.600 333.330	RDBM TAG IN SE COR DROP INLET 6M(19.7FT) W/O C/L SAN DIMAS AVE & 451M(0.3MI) N/O C/L VIA VERDE	G 4258
SAN DIMAS (2005)	955.545 291.251	RDBM TAG IN SW COR DROP INLET 6.5M(21.3FT) E/O C/L SAN DIMAS AVE & 26.5M(87FT) N/O C/L AVENIDA LOMA VISTA	G 4259
SAN DIMAS (2005)	829.671 252.884	STATE DIV OF HWY MON IN S CB SAN DIMAS AVE 13M(42.7FT) S/O C/L & 108M(354FT) E/O C/L (210 FRWY) 4M(13FT) W/O C/L C. B.	G 4260
SAN DIMAS (2005)	834.179 254.259	RDBM TAG IN N CB SAN DIMAS AVE 13M(42.7FT) N/O C/L & 110M(361FT) E/O C/L (210 FWY) W/O W END GUARD RAIL	G 4261
SAN DIMAS (2005)	900.281 274.406	RDBM TAG IN PKWY DRAIN @ NE COR PUDDINGSTONE DR & SAN DIMAS AVE 18.5M(60.7FT) N/O & 12M(39.4FT) E/O C/L INT	G 4263

QUAD YEAR	ELEV FOOT/METER	DESCRIPTION	BM NUMBER
BASELINE (2005)	1,006.990 306.931	FC MON IN SW COR OF BRIDGE OVER SAN DIMAS WASH 14.5M(47.6FT) W/O C/L SAN DIMAS AVE & 19M(62.3FT) S/O C/L WOODLAND OAKS DR MKD (BM 088-03410 1965)	G 4268
BASELINE (2005)	1,024.537 312.280	CSBM MON IN CONC BRIDGE OVER SAN DIMAS WASH 9.5M(31.2FT) N/O C/L FOOTHILL BLVD & 15M(49.2FT) E/O C/L WALNUT AVE MKD (BM 11-47A 1962)	G 4269
BASELINE (2005)	1,105.658 337.006	FC MON IN CONC WALL 14M(46FT) S/O C/L FOOTHILL BLVD & 40M(131FT) W/O C/L RAMONA AVE MKD (BM 095-01650 1967)	G 4270
SAN DIMAS (2005)	925.787 282.181	COE BR MON IN E CB @ HSE #306 VALLEY CENTER AVE 7M(23FT) E/O C/L & 149M(489FT) S/O C/L CATHERINE PARK DR MKD (BD NO 35 1956)	G 4271
SAN DIMAS (2005)	948.264 289.032	RCE TAG #5828 IN E CB 1M(3.3FT) N/O BCR @ NE COR VALLEY CENTER AVE & CATHERINE PARK DR	G 4272
SAN DIMAS (2005)	959.685 292.513	RDBM TAG IN E CB 600MM(2FT) N/O BCR @ NE COR LORAINNE AVE & SIERRA MADRE AVE	G 4273
SAN DIMAS (2005)	760.571 231.823	L&BR IN E END C. B. 3.5M(11.5FT) E/O BCR @ NE COR GRAND AVE & LEADORA AVE	G 4276
SAN DIMAS (2005)	759.436 231.477	L&BR IN S CB 1.5M(5FT) E/O BCR @ SE COR LEADORA AVE & GRAND AVE	G 4277
SAN DIMAS (2005)	736.414 224.460	SPK IN N CB 12M(39.4FT) E/O BCR @ NE COR BENNETT AVE & GRAND AVE MKD (SD 337)	G 4278
BASELINE (2005)	658.817 200.808	L&SPK IN E CB @ BCR @ SE COR BARRANCA AVE & ALOSTA AVE	G 4281
BASELINE (2005)	703.995 214.578	RDBM TAG IN S CB 300MM(1FT) W/O BCR @ SE COR ALOSTA AVE & GRAND AVE	G 4282
BASELINE (2005)	769.744 234.619	RDBM TAG IN S CB 300MM(1FT) E/O BCR @ SW COR ALOSTA AVE & LEMAR PARK DR	G 4283
BASELINE (2005)	1,040.546 317.159	L&T IN CTR OF CB RET @ NW COR WHITE AVE & ARROW HWY	G 4293
BASELINE (2005)	861.704 262.648	RAMSET IN E CB 5M(16.4FT) S/O BCR @ SE COR WHITE AVE & HOLT AVE	G 4299
BASELINE (2005)	889.332 271.069	L&PK NAIL IN CTR OF CB RET @ NE COR WHITE AVE & ORANGE GROVE AVE	G 4300
BASELINE (2005)	936.190 285.352	PK NAIL IN CB 300MM(1FT) N/O BCR @ SE COR MC KINLEY AVE & WHITE AVE	G 4301
BASELINE (2005)	937.863 285.862	FC BR DISC IN W END HDWL OF FC CHANNEL @ NW COR MC KINLEY AVE & WHITE AVE 35M(115FT) W/O & 11.3M(37FT) N/O C/L INT MKD (BM 105-00005)	G 4302
BASELINE (2005)	1,104.885 336.770	L&T IN W CB WHITE AVE 12.2M(40FT) W/O C/L & 7.6M(25FT) S/O C/L PROD KENDELL ST	G 4303

QUAD YEAR	ELEV FOOT/METER	DESCRIPTION	BM NUMBER
BASELINE (2005)	1,163.118 354.519	RDBM TAG IN W CB 600MM(2FT) S/O BCR @ SW COR FRUIT ST & BOWDOIN ST	G 4306
SAN DIMAS (2005)	1,123.695 342.503	L&SPK IN S CB 300MM(1FT) W/O BCR @ SE COR FOOTHILL BLVD & WHEELER RD	G 4362
SAN DIMAS (2005)	1,051.827 320.598	L&PK IN W CB 300MM(1FT) N/O BCR @ SW COR DAMIEN AVE & BONITA AVE	G 4366
SAN DIMAS (2005)	1,033.822 315.110	L&T IN N CB 6.5M(21.3FT) E/O BCR @ NE COR ARROW HWY & WHEELER AVE	G 4370
SAN DIMAS (2005)	1,033.570 315.033	RDBM TAG IN S CB 10M(32.8FT) E/O BCR @ SE COR ARROW HWY & WHEELER AVE	G 4371
SAN DIMAS (2005)	772.346 235.412	L&CE TAG NR CTR CB RET 5M(16.4FT) S/O BCR @ NW COR ARROW HWY & SUNFLOWER AVE	G 4380
SAN DIMAS (2005)	942.021 287.129	L&BR IN N CB 13.5M(44.3FT) E/O BCR @ NE COR CATARACT AVE & BONITA AVE	G 4395
SAN DIMAS (2005)	941.585 286.996	RDBM TAG IN W CB 600MM(2FT) S/O BCR @ NW COR BONITA AVE & CATARACT AVE	G 4396
SAN DIMAS (2005)	948.340 289.055	RDBM TAG IN N CB 300MM(1FT) E/O BCR @ NE COR AMELIA AVE & 5TH ST	G 4399
SAN DIMAS (2005)	702.337 214.073	L&CE TAG IN S CB 300MM(1FT) E/O BCR @ SE COR LYMAN AVE & PALM DR	G 4400
SAN DIMAS (2005)	702.293 214.060	L&SPK IN N CB 1.5M(5FT) E/O BCR @ NE COR LYMAN AVE & PALM DR	G 4401
SAN DIMAS (2005)	672.376 204.941	L&BR IN S CB 3.5M(11.5FT) W/O BCR @ SW COR PUENTE ST & RANCHO CORTO DR	G 4405
SAN DIMAS (2005)	674.921 205.717	L&BR IN S CB 3.5M(11.5FT) E/O BCR @ SE COR PUENTE ST & RANCHO CORTO DR	G 4406
SAN DIMAS (2005)	753.619 229.704	L&RDBM TAG IN N CB PUENTE ST 1M(3.3FT) W/O BCR 10M(32.8FT) N/O C/L & 16M(52.5FT) W/O C/L VIA ESPERANZA	G 4407
SAN DIMAS (2005)	755.721 230.344	RDBM TAG IN N CB PUENTE ST 300MM(1FT) E/O BCR 10M(32.8FT) N/O C/L & 15M(49.2FT) E/O C/L VIA ESPERANZA	G 4408
SAN DIMAS (2005)	658.922 200.840	FC MON @ NE COR OF BRIDGE 13.5M(44.3FT) E/O C/L GRAND AVE & 44M(144FT) N/O C/L ARROW HWY MKD (BM 088-00040)	G 4554
SAN DIMAS (2005)	989.511 301.604	L&T IN N CB 1M(3.3FT) W/O BCR @ NW COR CATARACT AVE & 5TH ST	G 4555
SAN DIMAS (2005)	988.147 301.188	SPK IN W CB 2.5M(8.2FT) S/O BCR @ SW COR CATARACT AVE & 5TH ST	G 4556
SAN DIMAS (2005)	922.698 281.239	RDBM TAG IN C. B. 1.5M(5FT) N/O BCR @ NE COR ARROW HWY & CATARACT AVE	G 4557

QUAD YEAR	ELEV FOOT/METER	DESCRIPTION	BM NUMBER
SAN DIMAS (2005)	758.886 231.309	FC TAG IN E CB 300MM(1FT) N/O BCR @ NE COR VALLEY CENTER AVE & CYPRESS ST	G 4559
BASELINE (2005)	1,165.534 355.256	RDBM TAG IN E CB 300MM(1FT) N/O BCR @ NE COR FRUIT ST & BOWDOIN ST	G 4560
BASELINE (2005)	1,174.345 357.941	RDBM TAG IN S CB 300MM(1FT) W/O BCR @ SW COR BASELINE RD & FRUIT ST	G 4561
BASELINE (2005)	567.654 173.021	L&T IN N CB 300MM(1FT) W/O BCR @ NW COR CITRUS AVE & COVINA BLVD	G 4648
BASELINE (2005)	571.634 174.235	L&BR IN W CB 600MM(2FT) S/O BCR @ SW COR CITRUS AVE & TUDOR ST	G 4649
SAN DIMAS (2005)	523.851 159.670	L&BR IN W CB OAK CYN RD ON C/L PROD COVINA HILLS RD (FROM THE E) @ HSE #1040	G 4651
SAN DIMAS (2005)	619.724 188.892	L&BR IN N CB 4M(13FT) E/O BCR @ NE COR COVINA HILLS RD & LA CARLOTA RD	G 4653
BASELINE (2005)	964.939 294.114	L&SPK IN CONC HDWL @ SE COR BRIDGE #B2825 OVER THOMPSON CREEK 15.5M(51FT) E/O C/L WHITE AVE & 45M(148FT) S/O C/L DRWY ENT GATE #5 (483M(0.3MI) N/O MC KINLEY AVE)	G 4656
BASELINE (2005)	965.205 294.195	COE MON IN C. B. 14M(46FT) E/O C/L WHITE AVE & 16M(52.5FT) N/O N END BRIDGE OVER THOMPSON CREEK 21M(69FT) S/O C/L GATE #5 MKD (TSJ 120 1960)	G 4657
BASELINE (2005)	1,003.511 305.871	DPW BM TAG IN E CB WHITE AVE 14.5M(47.6FT) E/O C/L 3M(10FT) N/O BCR ISLE @ GATE #14 TO LACO FAIR GROUNDS 644M(0.4MI) S/O ARROW HWY	G 4659
BASELINE (2005)	1,067.369 325.335	DPW BM TAG IN E CB 300MM(1FT) S/O BCR @ NE COR WHITE AVE & BONITA AVE	G 4660
BASELINE (2005)	1,156.038 352.361	DPW BM TAG IN C. B. 9M(29.5FT) E/O BCR @ NE COR FOOTHILL BLVD & TOWNE CENTER DR	G 4661
BASELINE (2005)	1,142.427 348.213	DPW BM TAG IN C. B. 1.5M(5FT) E/O BCR @ NE COR FRUIT ST & FOOTHILL BLVD	G 4662
BASELINE (2005)	1,178.837 359.311	SPK&W IN N CB BASELINE RD 12M(39.4FT) N/O C/L & 17.5M(57.4FT) E/O C/L PROD FRUIT ST	G 4663
SAN DIMAS (2005)	1,086.251 331.090	DPW BM TAG IN W CB SAN DIMAS AVE 27M(88.6FT) S/O BCR 7.5M(24.6FT) W/O C/L & 35M(115FT) S/O C/L VIA VERDE	G 4700
SAN DIMAS (2005)	986.611 300.720	L&T IN N CB ARROW HWY 13M(42.7FT) N/O C/L & 161M(528FT) E/O C/L ARTESIAN CT (OPP BLDG #510)	G 4701
SAN DIMAS (2005)	1,002.668 305.614	DPW BM TAG IN S CB 300MM(1FT) W/O BCR @ SW COR ARROW HWY & SAN DIMAS CYN RD	G 4702
BASELINE (2005)	1,165.268 355.175	CS TAG IN N CB 300MM(1FT) E/O BCR @ NE COR BASELINE RD & EMERALD AVE	G 4703
BASELINE (2005)	1,167.237 355.775	CS TAG IN W CB 300MM(1FT) N/O BCR @ NW COR BASELINE RD & EMERALD AVE	G 4704

QUAD YEAR	ELEV FOOT/METER	DESCRIPTION	BM NUMBER
BASELINE (2005)	1,110.141 338.372	DPW BM TAG IN S CB 300MM(1FT) E/O BCR @ SE COR FOOTHILL BLVD & ROMONA AVE	G 4705
BASELINE (2005)	1,018.691 310.498	DPW BM TAG IN S CB 300MM(1FT) W/O BCR @ SW COR FOOTHILL BLVD & SAN DIMAS AVE	G 4706
BASELINE (2005)	954.672 290.985	DPW BM TAG IN W CB 300MM(1FT) N/O BCR @ SW COR ALOSTA AVE & AMELIA AVE	G 4707
BASELINE (2005)	887.904 270.634	DPW BM TAG IN N CB 300MM(1FT) E/O BCR @ NE COR ALOSTA AVE & LONE HILL AVE	G 4708
BASELINE (2005)	801.108 244.178	L&N IN S CB 2ND ST NR E END C. B. 8.8M(29FT) S/O C/L & 100M(328FT) E/O C/L HWY (71)	G 4750
SAN DIMAS (2005)	734.825 223.975	DPW BM TAG IN N CB 3.5M(11.5FT) E/O BCR @ NE COR ARROW HWY & BONNIE COVE AVE	G 4785
SAN DIMAS (2005)	899.325 274.115	DPW BM TAG IN W CB CIENEGA AVE 300MM(1FT) S/O BCR 10.5M(34.4FT) W/O C/L & 24M(79FT) S/O C/L ARROW HWY	G 4786
SAN DIMAS (2005)	916.458 279.337	DPW BM TAG IN W CB 2M(6.5FT) N/O BCR @ NW COR GLADSTONE ST & AMELIA AV	G 4787
SAN DIMAS (2005)	928.723 283.076	DPW BM TAG IN W CB 2M(6.5FT) N/O BCR @ NW COR AMELIA AVE & AUTO CTR DR	G 4788
SAN DIMAS (2005)	1,113.710 339.460	LS TAG #3054 IN SLY CB FERNRIDGE DR 7.3M(24FT) W/O BCR 5.5M(18FT) S/O C/L & 21M(69FT) W/O C/L SAN DIMAS CYN RD	G 4789
SAN DIMAS (2005)	1,323.954 403.542	L&RCE TAG #14568 IN E CB 21M(69FT) N/O BCR 9M(29.5FT) E/O C/L WHEELER AVE & 35M(115FT) N/O C/L BIRDIE DR	G 4793
BASELINE (2005)	555.987 169.465	DPW BM TAG IN N CB 2.5M(8.2FT) E/O BCR @ NE COR 1ST ST & BADILLO ST	G 4933
BASELINE (2005)	543.181 165.562	DPW BM TAG IN W CB 1M(3.3FT) S/O BCR @ SW COR CITRUS AVE & BADILLO ST	G 4934
BASELINE (2005)	556.013 169.473	DPW BM TAG S CB 1M(3.3FT) E/O BCR @ SE COR CITRUS AVE & SAN BERNADINO RD	G 4935
BASELINE (2005)	567.416 172.949	NGS BR DISC MON IN S CB 1.5M(5FT) E/O BCR @ SE COR CITRUS AVE & CYPRESS ST MKD (A-2 F.M.K. 1974)	G 4936
BASELINE (2005)	570.108 173.769	USGS MON IN SE CB RET 3M(9.8FT) W/O BCR @SE COR CITRUS AVE & COVINA BL MKD (A 3 F 1 1974 RESET 1977)	G 4937
BASELINE (2005)	587.319 179.015	CE TAG IN E CB @ SE COR OF BRIDGE OVER BIG DALTON WASH 9M(29.5FT) E/O C/L CITRUS AVE & 420M(0.25MI) N/O ARROW HWY	G 4938
BASELINE (2005)	591.425 180.267	L&BR IN S CB E END C. B. 23M(75.5FT) E/O BCR @ SE COR CITRUS AVE & GLADSTONE ST	G 4939
BASELINE (2005)	619.307 188.765	CITY OF AZUSA BR DISC MON IN W CB 500MM(1.6FT) S/O BCR @ SW COR CITRUS AVE & ALOSTA AVE MKD (BM 66-13)	G 4940

QUAD YEAR	ELEV FOOT/METER	DESCRIPTION	BM NUMBER
SAN DIMAS (2005)	573.167 174.702	L&BR IN W EDGE CONC DRWY TO HSE #19933 COVINA HILLS RD 4.5M(14.8FT) N/O C/L 750MM(2.5FT) N/O EDGE PVMT & 3.5M(11.5FT) E/O MI MKR #10	G 4962
SAN DIMAS (2005)	689.416 210.135	DPW BM TAG IN CONC F HYD PAD 18M(59FT) E/O C/L DRWY TO HSE #20714 COVINA HILLS RD 6M(19.7FT) S/O C/L ST	G 4963
SAN DIMAS (2005)	864.976 263.645	DPW BM TAG 4.5M(15FT) E/O C/L CONC DRWY TO HSE #21138 COVINA HILLS RD & 6M(20FT) S/O C/L ST	G 4964
BASELINE (2005)	812.548 247.665	DPW BM TAG IN S CB 2ND ST 1M(3.3FT) E/O E END C. B. 7M(23FT) S/O C/L & 530M(0.3MI) E/O C/L HWY 71 (CORONA EXPRESS WY) 2.6M(8.5FT) W/O PP #G782Y	G 4965
BASELINE (2005)	873.489 266.240	BR DISC IN E CB 1M(3.3FT) S/O BCR @ SE COR WHITE AVE & CHESTER PL MKD (YLF 104 1994)	G 4971
BASELINE (2005)	905.245 275.920	L&BR IN N CB 13M(42.7FT) E/O BCR @ NE COR WHITE AVE & PRECIADO ST	G 4972
BASELINE (2005)	1,016.076 309.701	DPW BM TAG IN E CB 1M(3.3FT) N/O BCR @ NE COR ENT TO BLDG #1510 WHITE AVE 13M(42.7FT) E/O C/L & 10M(32.8FT) N/O C/L DRWY (@ F HYD)	G 4973
BASELINE (2005)	1,159.187 353.321	DPW BM TAG IN E CB 1M(3.3FT) N/O BCR @ NE COR FRUIT ST & AMHERST ST	G 4974
BASELINE (2005)	704.105 214.612	L&BR IN N CB W END C B 7M(23FT) E/O BCR @ NE COR GRAND AVE & ALOSTA AVE	G 4975
BASELINE (2005)	730.139 222.547	BT SPK IN S CB 2M(6.5FT) E/O BCR @ SE COR ALOSTA AVE & VERMONT AVE	G 4976
BASELINE (2005)	746.144 227.425	DPW BM TAG IN E CB 1M(3.3FT) N/O BCR @ NE COR ALOSTA AVE & GLEN DORA AVE	G 4977
BASELINE (2005)	758.413 231.165	DPW BM TAG IN E CB 1M(3.3FT) S/O BCR @ SE COR ALOSTA AVE & PASADENA AVE	G 4978
BASELINE (2005)	848.621 258.660	DPW BM TAG IN S CB 1M(3.3FT) E/O BCR @ SE COR ALOSTA AVE & ENT TO APT BLDG #1712 11M(36FT) S/O & 8.5M(28FT) E/O C/L INT (OPP COMPROMISE LINE RD)	G 4979
BASELINE (2005)	909.298 277.155	DPW BM TAG IN S CB ALOSTA AVE 13M(42.7FT) S/O C/L & 5M(16.4) W/O C/L DRWY TO BLDG #2064	G 4980
BASELINE (2005)	1,028.650 313.533	L&BR IN S CB FOOTHILL BLVD 13M(42.7FT) S/O C/L & 45M(148FT) E/O C/L PROD CATARACT AVE (MOST ELY POINT)	G 4981
BASELINE (2005)	1,044.312 318.307	L&BR IN N CB 300MM(1FT) E/O BCR @ NE COR FOOTHILL BLVD & DEER CREEK RD	G 4982
BASELINE (2005)	1,153.543 351.601	LS TAG #3393 IN S CB BASELINE RD 12M(39.4FT) S/O C/L & 3.5M(11.5FT) W/O C/L DRWY HSE #1204 (@ W P/L) 96M(315FT) W/O CATALINA AV	G 4983
BASELINE (2005)	1,164.819 355.038	DPW BM TAG IN S CB 1M(3.3FT) E/O BCR @ SE COR BASELINE RD & WHEELER AVE	G 4984

QUAD YEAR	ELEV FOOT/METER	DESCRIPTION	BM NUMBER
BASELINE (2005)	1,166.491 355.548	MWD BR DISC IN W END C. B. 8M(26.2FT) W/O BCR @ NW COR BASELINE RD & EMERALD AVE MKD (BM RF A-3 1989)	G 4985
SAN DIMAS (2005)	1,022.897 311.780	DPW BM TAG W CB SAN DIMAS AVE 7.5M(24.6FT) W/O C/L & 321M(0.2MI) S/O C/L AVENIDA LOMA VISTA @ LT STD #2221710F	G 4987
SAN DIMAS (2005)	863.101 263.074	DPW BM TAG IN NW COR DROP INLET 5.5M(18FT) S/O C/L SAN DIMAS AVE & 690M(0.4MI) E/O C/L (210 FRWY) 27.5M(90FT) W/O W END GUARD RAIL @ RAGING WATERS	G 4988
SAN DIMAS (2005)	926.854 282.506	DPW BM TAG IN E CB 1M(3.3FT) S/O BCR @ SE COR SAN DIMAS AVE & VIA VAQUERO	G 4989
SAN DIMAS (2005)	1,046.857 319.083	DPW BM TAG IN N CB E END C. B. 1.5M(5FT) E/O BCR @ NE COR ARROW HWY & E ST (FAIRPLEX DR TO S)	G 4990
SAN DIMAS (2005)	1,036.259 315.853	L&BR IN N CB ARROW HWY 13M(42.7FT) N/O C/L & 7.5M(24.6FT) W/O C/L PROD C ST	G 4991
SAN DIMAS (2005)	1,038.200 316.444	L&T IN CB RET 1.5M(5FT) W/O BCR @ NE COR ARROW HWY & A ST	G 4992
SAN DIMAS (2005)	1,012.733 308.682	DPW BM TAG IN N CB NR W END C. B. 13M(42.7FT) N/O C/L ARROW HWY & 4.5M(14.8FT) E/O C/L PROD PUDDINGSTONE CHANNEL	G 4993
SAN DIMAS (2005)	1,004.728 306.242	DPW BM TAG IN N CB 4.5M(14.8FT) E/O BCR @ NE COR ARROW HWY & SAN DIMAS CYN RD	G 4994
SAN DIMAS (2005)	963.160 293.572	L&T IN S CB 1.5M(5FT) W/O BCR @ SW COR ARROW HWY & WALNUT AVE	G 4995
SAN DIMAS (2005)	901.504 274.779	DPW BM TAG IN N CB 300MM(1FT) W/O BCR @ NE COR ARROW HWY & BONITA AVE	G 4996
SAN DIMAS (2005)	882.187 268.891	DPW BM TAG IN N CB 300MM(1FT) W/O BCR @ NW COR ARROW HWY & OFF-RAMP S BND (210 FRWY) (W SIDE FRWY)	G 4997
SAN DIMAS (2005)	753.328 229.615	PK&L IN S CB 2M(6.5FT) W/O BCR @ SW COR ARROW HWY & LYMAN AVE	G 4998
SAN DIMAS (2005)	615.423 187.581	L&T IN CB RET 4M(13FT) W/O BCR @ SE COR ARROW HWY & BARRANCA AVE 18M(59FT) E/O & 13M(42.7FT) S/O C/L INT	G 4999
SAN DIMAS (2005)	621.973 189.578	DPW BM TAG IN W CB 2M(6.5FT) N/O BCR @ NW COR GRAND AVE & SAN BERNARDINO RD	G 5000
SAN DIMAS (2005)	630.866 192.289	CSBM DISC IN S END C. B. 13M(42.7FT) N/O BCR @ NE COR GRAND AVE & CYPRESS ST MKD (BM 9-5B 1971 RE 7078)	G 5001
SAN DIMAS (2005)	649.927 198.098	DPW BM TAG IN E CB 300MM(1FT) N/O BCR @ NE COR GRAND AVE & CIENEGA AVE	G 5002
SAN DIMAS (2005)	675.210 205.805	DPW BM TAG IN E CB S END C. B. 12M(39.4FT) N/O BCR @ NE COR GRAND AVE & BASELINE RD	G 5003
SAN DIMAS (2005)	934.664 284.886	L&SPK IN E CB 300MM(1FT) N/O BCR @ NE COR BANNA AVE & SIERRA MADRE AVE	G 5005

QUAD YEAR	ELEV FOOT/METER	DESCRIPTION	BM NUMBER
SAN DIMAS (2005)	990.893 302.025	CE TAG IN N CB SIERRA MADRE AVE 8M(26.2FT) N/O C/L ON C/L PROD WILLOWGROVE AVE	G 5006
SAN DIMAS (2005)	884.436 269.577	BT SPK IN N CB 1M(3.3FT) E/O BCR @ NE COR FOOTHILL BLVD & OAK TREE DR	G 5007
SAN DIMAS (2005)	957.333 291.796	BT SPK IN E CB 1M(3.3FT) S/O BCR @ SE COR FOOTHILL BLVD & COUNTRY CLUB RD	G 5008
SAN DIMAS (2005)	932.640 284.270	DPW BM TAG IN NW COR OF BRIDGE OVER FC CHANNEL 10M(32.8FT) W/O C/L AMELIA AVE & 22M(72FT) N/O C/L PROD BASELINE RD (FR THE EAST)	G 5009
SAN DIMAS (2005)	932.614 284.262	DPW BM TAG IN E CB 1.5M(5FT) N/O BCR @ NE COR AMELIA AVE & BASELINE RD (FR THE E) (SE COR BRIDGE)	G 5010
SAN DIMAS (2005)	915.099 278.923	L&BR IN S CB 2M(6.5FT) W/O BCR @ SW COR GLADSTONE ST & PEARLANNA DR (AMELIA AVE TO N)	G 5011
SAN DIMAS (2005)	582.719 177.613	L&BR IN N CB 6M(19.7FT) N/O C/L PUENTE ST NR CTR OF BRIDGE 16.5M(54FT) E/O W END & 483M(0.3MI) S/O C/L INT OLD BADILLO ST (REEDER AVE TO E)	G 5017
SAN DIMAS (2005)	645.091 196.624	DPW BM TAG IN S CB PUENTE ST 6M(20FT) S/O C/L & 37M(121FT) E/O C/L MESARICA RD	G 5018
SAN DIMAS (2005)	712.093 217.047	LS TAG #2602 IN E CB @ BCR NE COR PUENTE ST & AVENIDA MONTE VISTA	G 5019
SAN DIMAS (2005)	802.072 244.472	LS TAG #2602 IN W CB VIA PALOMARES 300MM(1FT) N/O BCR 6M(19.7FT) W/O C/L & 20M(65.6FT) N/O C/L PUENTE ST	G 5020
SAN DIMAS (2005)	1,075.121 327.698	DPW TAG IN E CB 1M(3.3FT) S/O BCR @ SE COR GLADSTONE ST & DAMIEN AVE ST	G 5021
SAN DIMAS (2005)	1,075.992 327.963	LS TAG #3393 IN N CB 5M(16.4FT) E/O BCR @ NE COR GLADSTONE AVE & DAMIEN AVE	G 5022
SAN DIMAS (2005)	1,101.204 335.648	DPW BM TAG IN W CB 2M(6.5FT) S/O BCR @ SW COR DAMIEN AVE & HORMEL AVE	G 5023
SAN DIMAS (2005)	1,111.588 338.813	L&T IN E CB SAN DIMAS CYN RD 10M(32.8FT) E/O C/L & 10M(32.8FT) S/O C/L PROD FERNRIDGE DR	G 5024
SAN DIMAS (2005)	1,174.584 358.014	DPW BM TAG IN E CB SAN DIMAS CYN RD 1M(3.3FT) S/O S END C. B. 6M(19.7FT) E/O C/L & 15M(49FT) N/O GOLF PATH 402M(0.25MI) N/O TERREBONNE AVE (OPP EDISON TOWER)	G 5025
SAN DIMAS (2005)	1,283.090 391.087	L&N IN E CB WHEELER AVE 10.5M(34.4FT) E/O C/L @ OR NR C/L PROD OLD WHEELER RD (S) NR N P/L HSE #5888	G 5026
SAN DIMAS (2005)	729.980 222.499	LACO BM TAG IN S CB 3.5M(11.5FT) E/O BCR @ SE COR FOOTHILL BLVD & GRAND AVE (W END C. B.)	G 5307
SAN DIMAS (2005)	729.727 222.421	LACO BM TAG IN N CB 6M(19.7FT) E/O BCR @ NE COR FOOTHILL BLVD & GRAND AVE	G 5308
SAN DIMAS (2005)	813.283 247.889	LACO BM TAG IN S CB 300MM(1FT) E/O BCR @ SE COR GRAND AVE & SIERRA MADRE BLVD	G 5309

QUAD YEAR	ELEV FOOT/METER	DESCRIPTION	BM NUMBER
SAN DIMAS (2005)	926.493 282.396	DPW TAG IN W CB 2.5M(8.5FT) N/O BCR @ SW COR SIERRA MADRE AVE & CULLEN AVE	G 5310
SAN DIMAS (2005)	993.851 302.927	L&T IN N CB PALM DR @ HSE #1049 6.5M(21.3FT) N/O C/L & 17M(56FT) W/O C/L LORAINA AVE (S)	G 5311
SAN DIMAS (2005)	1,004.232 306.091	LS TAG #7003 IN N CB 150MM(0.5FT) W/O BCR @ NW COR SIERRA MADRE AVE & MOUNTAIN LN (E END C. B.)	G 5312
SAN DIMAS (2005)	961.336 293.016	LACO BM TAG IN E CB NR S P/L HSE #508 VALLEY CENTER AVE 6.5M(21.3FT) E/O C/L & 4.5M(14.8FT) S/O C/L WINDING WAY	G 5313
SAN DIMAS (2005)	883.151 269.185	FC BM DISK MON IN W CB 300MM(1FT) S/O BCR @ SW COR FOOTHILL BLVD & VALLEY CENTER AVE MKD (82-48 1959)	G 5314
SAN DIMAS (2005)	957.482 291.841	LACO BM TAG IN S CB 600MM(2FT) W/O BCR @ SW COR COUNTRY CLUB DR & AMELIA AVE	G 5315
BASELINE (2005)	639.177 194.822	CITY OF AZUSA BM MON IN S CB 1M(3.3FT) NE/O BCR @ SE COR ALOSTA AVE & CALERA AVE MKD (66-14)	G 5316
BASELINE (2005)	743.952 226.757	L&T IN S CB 300MM(1FT) W/O BCR @ SW COR ALOSTA AVE & GLENDDORA AVE	G 5317
BASELINE (2005)	816.006 248.719	LACO BM TAG IN S CB @ #1200 ALOSTA AVE 13.5M(44.3FT) S/O C/L & 11.5M(37.7FT) E/O C/L DRWY TO QUAIL RIDGE CTR (@ F HYD)	G 5318
BASELINE (2005)	1,042.541 317.767	L&T IN N CB 300MM(1FT) W/O BCR @ NW COR FOOTHILL BLVD & DEER CREEK RD	G 5319
BASELINE (2005)	1,066.860 325.180	DPW TAG IN S CB 21M(69FT) E/O BCR @ SE COR FOOTHILL BLVD & SAN DIMAS CYN RD	G 5320
SAN DIMAS (2005)	673.378 205.246	LACO BM TAG IN S CB ARROW HWY 13M(42.7FT) S/O C/L & 29M(95FT) E/O C/L DRWY ENT TO BLDG #19650	G 5321
SAN DIMAS (2005)	812.294 247.588	LACO BM TAG IN W CB 1M(3.3FT) N/O BCR @ NW COR ARROW HWY & VALLEY CENTER AVE (@ END C. B.)	G 5322
SAN DIMAS (2005)	813.215 247.869	LACO BM TAG IN S CB 2.5M(8.2FT) E/O BCR @ SE COR ARROW HWY & VALLEY CENTER AVE	G 5323
SAN DIMAS (2005)	900.786 274.560	LACO BM TAG IN S CB ARROW HWY 13.5M(44.3FT) S/O C/L & 60M(197FT) E/O C/L BONITA AVE (5FT E/O E END WLY MOST DRWY ENT TO SAN DIMAS STATION CENTER)	G 5324
SAN DIMAS (2005)	957.496 291.846	L&T IN N CB 1.5M(5FT) E/O BCR @ NE COR CATARACT AVE & THIRD ST	G 5325
SAN DIMAS (2005)	968.047 295.062	LACO BM TAG IN N CB 1M(3.3FT) W/O BCR @ NW COR 5TH ST & EUCLA AVE	G 5326
SAN DIMAS (2005)	961.033 292.924	LACO BM TAG IN W CB 300MM(1FT) S/O BCR @ SW COR AMELIA AVE & DUELL ST	G 5327
SAN DIMAS (2005)	1,043.533 318.070	L&BRAD IN N CB 200MM(0.7FT) E/O BCR @ NE COR WHEELER AVE & BONITA AVE	G 5328

QUAD YEAR	ELEV FOOT/METER	DESCRIPTION	BM NUMBER
SAN DIMAS (2005)	1,041.673 317.503	LACO BM TAG IN S CB BONITA AVE 11M(36FT) S/O C/L & 30M(98FT) W/O C/L WHEELER AVE (10M(32.8FT) W/O W RR TRACK)	G 5329
SAN DIMAS (2005)	1,036.272 315.857	L&T IN S CB 300MM(1FT) W/O BCR @ SW COR BONITA AVE & THIRD ST	G 5330
SAN DIMAS (2005)	1,123.806 342.537	LACO BM TAG IN W CB 300MM(1FT) S/O BCR @ SW COR DAMIEN AVE & FOOTHILL BLVD	G 5331
SAN DIMAS (2005)	1,126.381 343.322	LACO BM TAG IN S CB 300MM(1FT) E/O BCR @ SE COR DAMIEN AVE & FOOTHILL BLVD	G 5332
SAN DIMAS (2005)	1,123.373 342.405	LACO BM TAG IN S CB 10M(32.8FT) W/O C/L E DRWY TO #1234 FOOTHILL BLVD 12.5M(41FT) S/O C/L INT	G 5333
BASELINE (2005)	1,134.782 345.883	CAL-TRANS DISK IN N CB 1M(3.3FT) W/O BCR @ NW COR BASELINE RD & BUNNELLE AVE MKD (LA 030-229 1997)	G 5334
BASELINE (2005)	1,162.761 354.411	L&N IN E CB 1M(3.3FT) N/O BCR @ NE COR BASELINE RD & ESPERANZA DR 24M(78.7FT) N/O & 7.5M(24.6FT) E/O C/L INT	G 5335
SAN DIMAS (2005)	1,188.040 362.116	LACO BM TAG IN W CB 1M(3.3FT) S/O BCR @ SW COR WHEELER AVE & RUGGLES ST	G 5336
SAN DIMAS (2005)	1,121.608 341.867	LACO BM TAG IN S CB SAN DIMAS CYN RD 1M(3.3FT) E/O BCR 9M(29.5FT) S/O C/L & 17M(56FT) E/O C/L LA MESA OAK RD	G 5337
SAN DIMAS (2005)	1,095.351 333.864	L&T IN S CB SAN DIMAS CYN RD 500MM(1.6FT) E/O BCR 8.5M(28FT) S/O C/L & 13M(42.7FT) W/O C/L RAMOLA DR	G 5338
SAN DIMAS (2005)	1,072.572 326.921	LACO BM TAG IN E CB 1M(3.3FT) S/O BCR @ SE COR SAN DIMAS CYN RD & DOGWOOD DR	G 5340
SAN DIMAS (2005)	631.141 192.372	L&BN IN W CB 3.5M(11.5FT) N/O BCR @ SW COR BADILLO ST & GLENDDORA AVE	G 5341
SAN DIMAS (2005)	649.801 198.060	L&T IN S CB OLD BADILLO ST 6.5M(21.3FT) S/O C/L ON C/L PROD BANNA AVE (HSE #1504)	G 5342
SAN DIMAS (2005)	697.242 212.520	LACE TAG IN W CB LYMAN AVE 5M(16.4FT) W/O C/L & 5M(16.4FT) S/O C/L PROD SCARBOROUGH LN (HSE #221)	G 5343
SAN DIMAS (2005)	707.398 215.616	LACO DWP TAG IN E CB LYMAN AVE 5M(16.4FT) S/O BCR 7M(23FT) E/O C/L & 25M(82FT) S/O C/L BADILLO ST	G 5344
SAN DIMAS (2005)	713.112 217.357	LACO BM TAG IN E CB 1M(3.3FT) N/O BCR @ NE COR LYMAN AVE & HALLER ST	G 5345
SAN DIMAS (2005)	732.181 223.169	LACO DPW TAG IN S CB 4M(13FT) W/O BCR @ SE COR CYPRESS ST & SUNFLOWER AVE	G 5346
SAN DIMAS (2005)	785.329 239.369	LACO BM TAG IN E CB 1M(3.3FT) S/O BCR @ SE COR VALLEY CTR AVE & COVINA BLVD	G 5347
SAN DIMAS (2005)	795.221 242.384	LACO FC TAG IN S CB 300MM(1FT) W/O BCR @ SE COR VALLEY CTR AVE & CEINEGA AVE	G 5348
SAN DIMAS (2005)	658.600 200.742	LACO BM TAG IN N CB PUENTE ST 10M(32.8FT) N/O C/L & 11M(36FT) W/O C/L DRWY TO HSE #1909	G 5349

QUAD YEAR	ELEV FOOT/METER	DESCRIPTION	BM NUMBER
SAN DIMAS (2005)	847.217 258.233	LACO BM TAG IN S CB VIA VERDE 1M(3.3FT) E/O BCR 13M(42.7FT) S/O C/L & 18M(59FT) E/O C/L DEL SUR	G 5350
SAN DIMAS (2005)	1,084.468 330.547	LS TAG #6927 IN N CB @ BCR NE COR VIA VERDE & SAN DIMAS AVE	G 5351
SAN DIMAS (2005)	964.883 294.097	L& BR IN W CB 300MM(1FT) S/O BCR @ SW COR SAN DIMAS AVE & AVENIDA LOMA VISTA	G 5352
SAN DIMAS (2005)	871.872 265.747	LACO BM TAG IN E CB 1M(3.3FT) N/O CB END 11.5M(37.7FT) E/O C/L SAN DIMAS AVE & 117M(380FT) S/O C/L 210 FRWY (6.5FT S/O CTR DROP INLET)	G 5353
BASELINE (2005)	1,162.659 354.380	L&LS TAG IN S CB @ BCR @ SW COR BASELINE RD & WHEELER AV 12.2M(40FT) S/O & 22.9M(75FT) W/O C/L INT	G 5446
BASELINE (2005)	544.693 166.023	L&DPW TAG MC CB @ NW COR CITRUS AV & BADILLO ST	G 5447
BASELINE (2005)	565.101 172.243	L&DPW BM TAG IN CB 300MM(1FT) E/O BCR @ NW COR CITRUS AV & CYPRESS ST	G 5448
SAN DIMAS (2005)	983.143 299.663	L&BM TAG IN S CB 300MM(1FT) W/O BCR @ SW COR 5.5M(18FT) S/O & 17.4M(57FT) W/O C/L INT	G 5473
SAN DIMAS (2005)	906.610 276.336	L&LACO ENG TAG IN N CB @ NW COR FOOTHILL BL & LONEHILL AV 10.7M(35FT) N/O & 53M(175FT) W/O C/L INT	G 5474
SAN DIMAS (2005)	1,409.135 429.506	L&LACE TAG NR MCR 4.6M(15FT) E/O BCR @ SW COR WHEELER AV & GOLDEN HILLS RD 12.2M(40FT) S/O & 18.3(60FT) W/O C/L INT	G 5476
SAN DIMAS (2005)	1,121.529 341.843	L&T IN W CB 300MM(1FT) S/O BCR @ SW COR FOOTHILL BL & WHEELER AV 21M(69FT) S/O & 13.1M(43FT) W/O C/L INT	G 5477
SAN DIMAS (2005)	946.177 288.396	L&CE TAG IN E CB 150MM(0.5FT) S/O BCR @ SE COR AMELIA AV & 5TH ST 6.1M(20FT) S/O & 12.2M(40FT) E/O C/L INT	G 5478
SAN DIMAS (2005)	1,018.488 310.436	L&T IN N CB @ PROD OF CARRION RD 15.2M(50FT) N/O ARROW HWY	G 5479
SAN DIMAS (2005)	658.345 200.664	L&LADPW TAG 600MM(2FT) S/O BCR @ NW COR ARROW HWY & GRAND AV 12.2M(40FT) N/O & 12.2M(40FT) W/O C/L INT	G 5480
SAN DIMAS (2005)	861.360 262.543	L&T IN S CB 300MM(1FT) E/O BCR @ SE COR ARROW HWY & LONE HILL AV 22.9M(75FT) E/O & 12.2M(40FT) S/O C/L INT	G 5481
SAN DIMAS (2005)	692.388 211.040	L&T IN N CB 1.5M(5FT) E/O BCR @ NE COR GRAND AV & MAUNA LOA AV 22.9M(75FT) E/O & 6.1M(20FT) N/O C/L INT	G 5482
SAN DIMAS (2005)	664.254 202.465	L&T @ SE COR GRAND AV & GLADSTONE ST 3M(10FT) N/O BCR 18.3M(60FT)S/O & 18.3M(60FT) E/O C/L INT	G 5483
SAN DIMAS (2005)	755.189 230.182	L&LACO BM TAG @ BCR @ NW COR BADILLO ST & CYPRESS ST 27.4M(90FT) W/O & 10.7M(35FT) N/O C/L INT	G 5484
SAN DIMAS (2005)	752.008 229.213	MWD BRASS DISK IN N CB CYPRESS ST 4.6M(15FT) E/O C/L PROD TREANOR ST @ E END C.B. 10.7M(35FT) N/O C/L CYPRESS ST	G 5485

QUAD YEAR	ELEV FOOT/METER	DESCRIPTION	BM NUMBER
SAN DIMAS (2005)	721.431 219.893	L&T IN N CB CYPRESS ST @ C/L PROD LYMAN ST	G 5486
SAN DIMAS (2005)	684.492 208.634	L&RCE#9070 TAG 600MM(2FT) W/O BCR @ SE COR OLD BADILLO ST & REEDER AV 6.7M(22FT) & 18.9M(62FT) E/O C/L INT	G 5487
SAN DIMAS (2005)	900.069 274.342	L&SPK W/DPW W @ NE COR DROP INLET @ NE COR SAN DIMAS AV & PUDDINGSTONE DR 11.3M(37FT) N/O & 13.1M(43FT) E/O C/L INT	G 5488
SAN DIMAS (2005)	729.280 222.285	L&DPW BM TAG @ N END C.B. @ E END PROP. LINE HSE#20822 15.2M(50FT) S/O C/L COVINA HILLS RD	G 5489
SAN DIMAS (2005)	635.489 193.698	L&DPW BM TAG IN CB RUNNING ALONG EAST EDGE DR HSE#1465 8.5M(28FT) N/O C/L COVINA HILLS RD	G 5490
SAN DIMAS (2005)	536.240 163.446	L&LADPW BM TAG 300MM(1FT) E/O BCR @ SE COR COVINA HILLS RD & RANCHO EL FUERTE DR 7.6M(25FT) S/O & 16.5M(54FT) E/O C/L INT	G 5491
SAN DIMAS (2005)	849.395 258.896	L&DPW BM TAG 900MM(3FT) S/O BCR @ SW COR VIA VERDE & CAMINO DEL SUR 22.9M(75FT) S/O & 7.3M(24FT) W/O C/L INT	G 5496